

# RIVERDALE

fashionable living



AUTUMN  
WINTER

collection 2017/2018

STYLING TIPS  
INSPIRATION  
COOKING  
TRAVEL



Suggested Retail Price 4,95  
riverdale.nl





"Styling is like *poetry*,  
rhythm & rhyme  
in 3D."

Sam Hansen





**IT FEELS** like a lifetime ago that I graduated from the Artemis Academy for styling and design in Amsterdam with my REFURN project. I photographed discarded furniture surrounded by items that no longer had a purpose and then photographed them again in their new home, which happened to be my home. I thought it was a real pity to see these beautiful creations standing discarded and forlorn on the side of the street. So there I went, tearing down the A4 from Amsterdam on my way home in my bright-yellow Mazda MX-5 convertible, rooftop down in winter with two Bauhaus-style steel-tube chairs on the passenger seat. I couldn't just leave them standing there on Overtoom street in Amsterdam... So, my house became a blend of second-hand furniture and IKEA pieces mixed with a far-too expensive designer kitchen by Varenna. We only visited the second-hand shop these days if we were looking for something truly unique. That second-hand furniture would become such a trend I could never have imagined. However, with the crashing economy second-hand stores became a must for many people. I almost wanted to add 'luckily' to that sentence. After all, those stunning designs from the past have become fashionable once again: West German vases in the most varied shapes and patterns, steel-tube chairs, earthenware tableware in old-fashioned shades of brown, and little glasses with green stems have become icons. These classic pieces combine wonderfully with an industrial look that is unfinished, rustic, and rugged. That is actually really a bonus, as it saves you tonnes of paint and plaster. This is all topped off with a finishing touch provided by Mother Nature. We need green and healthy to contrast our busy lives. So we go looking for nature and hike through rugged forests and brave the windy beaches of winter but, unfortunately, that's not my thing. I prefer to stroll through the city on the look-out for cool cafés and restaurants now that the hospitality industry is booming. That's what makes ME happy; chatting with friends, drinking coffee...gallons of coffee, snacks, wine...more wine.

But to get back to that nature trend. I mean, I do have green walls... That has to be inspired by something. I've added a lot of plants to my home this last year, a few of those rustic wooden lanterns, and brown and beige cushions. Two years ago I was standing in my back garden sanding down a white wooden dining table to get it back to its natural wood colour and turned the garden into a winter wonderland of white paint flecks. I wrap presents in rustic craft paper tied with a piece of rope instead of a shiny ribbon and put a few nuts in a wooden bowl because nature is trending whether I like it or not! But you know what makes a difference? I don't go looking for nature. Instead, I bring nature to me. Fortunately I work for the right trendy home and living brand, because our new autumn collection proves that nature is hot right now. And nature can also be quite classy. After all, gold is a product of nature, and super-trendy right now. 'Autumn came with wind and gold'.

Sam Hansen - hoofd styling & design

*PS For all my faithful readers, you know I'm crazy about black fashion items but I've experimented a little and am now the proud owner of red heels, a red coat, and rediscovered red Chanel lipstick. Elegance and sophistication is back!*



4 Seduce

46



96 All natural & BLACK



30

136

18 It's time for a statement LOOK

- 6 BEAUTY OF BURGUNDY  
powder pink and exciting shades of red
- 14 INTERVIEW  
on the sideline with Patrick de Kleijn
- 18 LUXURY LODGE  
a statement look
- 28 EXCLUSIVE OFFER  
see also pages 70, 94, and 118
- 30 ROYAL BLUE  
timeless elegance
- 44 TRAVEL  
honeymoon in the Rockies
- 46 COOKING WITH MADRI  
good food equals a good mood
- 68 SAM  
noir et ... rouge
- 86 BEHIND THE SCENES  
meet the models
- 89 STYLE HOROSCOPE  
which home and living style are you?
- 93 MONTHLY MUST-HAVE  
I'm so excited
- 117 #FASHIONABLELIVING  
follow us
- 120 DINE IN STYLE WITH MADRI  
eat, drink, be merry
- 136 THE CHRISTMAS EXPRESS  
gold fever... soothed with bubbles
- 144 WHERE TO BUY  
shop till you drop





# *educe...*

with powder pinks, enticing shades of red, and accents of chocolate. A wealth of luxury in your interior. Complement this boudoir theme with luxury cushions with a velvet touch. Beautiful enough to wrap your arms around...





THE BEAUTY

OF

BURGUNDY



*Pretty in*  
**PINK**





# Cuddle up with cozy CUSHIONS



① Cushion Stripes burgundy - 45x45 cm - 001857 ② Cushion Line burgundy - 45x45 cm - 001858 ③ Cushion Heart burgundy - 45x45 cm - 001859 ④ Cushion Fab burgundy - 45x45 cm - 001860  
 ⑤ Cushion Chelsea rose - 60x60 cm - 003203 ⑥ Cushion Chelsea burgundy - 45x45 cm - 003290 ⑦ Cushion Paisley burgundy - 30x60 cm - 001856 ⑧ Cushion Flower burgundy - 30x60 cm - 001855  
 ⑨ Cushion Stripes emerald - 45x45 cm - 001867 ⑩ Cushion Line dark blue - 45x45 cm - 001868 ⑪ Cushion Heart dark blue - 45x45 cm - 001869 ⑫ Cushion Fab dark blue - 45x45 cm - 001870  
 ⑬ Cushion Chelsea emerald - 45x45 cm - 003293 ⑭ Cushion Chelsea dark blue - 60x60 cm - 003215 ⑮ Cushion Paisley dark blue - 30x60 cm - 001866 ⑯ Cushion Flower emerald - 30x60 cm - 001865





# PATRICK

## de Kleijn

Born in: The Hague on 21 December 1974  
Married to: Sophie de Kleijn - ten Bos  
Father to: Emilie, Frédérique, Maurits, Lucas, & Philine  
Lives in: Wassenaar

owner and director of Riverdale

## ‘PLANNING HAS BECOME OUR FAMILY’S WATCHWORD.’

Patrick and Sophie de Kleijn are the husband and wife team forming the driving force behind Riverdale. They took over this company specializing in home accessories in 2006. During the week, the company gets Patrick’s full attention, but at the weekend you’ll see him on the sidelines at his children’s sports clubs.

‘We try and teach our children that you don’t automatically get what you want in life. If you want to achieve something, you have to work hard for it.’ With five children and a company that involves a lot of travel for the parents, ‘planning’ has become the watchword for the De Kleijn family. ‘Sophie is an excellent planner, making sure that family life runs smoothly and that the children are able to combine school and homework with their sports clubs and other hobbies.’

Sport is something that all the children enjoy. All of them play hockey and some also play tennis or go horse riding. During the week, a lot of Patrick’s attention is taken up by the company, but it is the children that are his priority at weekends. This is when you’ll find Patrick coaching his daughter Emilie’s hockey club, cheering on his other children from the sidelines, working a shift at the bar, and doing other odd jobs where necessary. In addition, he sponsors two hockey clubs. ‘Sports clubs are completely reliant on volunteers and so I like to help out in various ways.’

Patrick thinks it is important for his children to take part in sports. ‘Not only can they burn off energy and meet other children, but it is also good for their health.’ Patrick himself works out at the gym together with a personal trainer. ‘Using a personal trainer is a way for me to stay motivated. This way, I know that I’ll go to the gym,’ he laughs. Now that his eldest two are at secondary school, attention has to be divided between sport and homework.

Riverdale is a real family-run business. From the very first day that Patrick started working at Riverdale, his father-in-law passed on to him his enthusiasm and passion for home accessories. He now shares this enthusiasm not only with the Riverdale team but also with the third generation!

### 12 QUESTIONS FOR PATRICK

- ① Football or hockey?  
That’s a difficult one! I played football myself for 24 years but all five of my children play hockey.
- ② Feyenoord or Ajax?  
Ajax plays the finest football but Feyenoord has the best mentality.
- ③ Coffee or beer?  
That depends on what time it is; I enjoy drinking both.
- ④ A lie in or standing on the sidelines?  
Standing on the sidelines.
- ⑤ Dining out or eating at home?  
Do I really have to choose? At home with friends and family and then I’ll do the cooking myself.
- ⑥ Sports coach or sports fan?  
Sports coach.
- ⑦ Volvo or BMW?  
BMW.
- ⑧ What did you want to be when you were a child?  
An engineer or a stock exchange dealer.
- ⑨ What would you change about yourself?  
Not wanting to do everything at once.
- ⑩ Favourite colour?  
Blue.
- ⑪ Favourite book?  
Steve Jobs.
- ⑫ What is at the top of your bucket list?  
Making a bucket list!



# GOLD

is the new  
**BLACK**



①

②

③

④

⑤

① Hurricane Vintage gold - 17 cm - 303120 ② Cushion Chelsea gold - 40x60 cm - 003297 ③ Lantern Midar gold - 36 cm - 002270 ④ Hurricane Vintage gold - 22 cm - 303122 ⑤ Side table Midar gold - 39 cm - 002272



Cabinet of curiosities:  
*a journey of discovery*  
through your trinkets.





# Luxury LODGE

The perfect place to escape an autumn storm. The rustic style of Luxury Lodge makes a statement in your home. Comfy up with that novel that you just can't put down surrounded by rustic and sober materials like steel, wood, and skins, and a wood fire roaring in the background.



① Stool Lodge brown - 50 cm - 301592 ② Cushion Lodge brown - 50x70 cm - 301593\* ③ Butterfly chair Lodge brown - 93 cm - 301590 ④ Leather chair Lewis brown - 82 cm - 002951\*

\*not available in the United Kingdom



Rain  
outside,  
but *fire*  
in my  
*soul.*



*It's time  
for a  
gutsy  
LOOK!*







Do more  
of what lights  
*your soul on fire...*



**EXCLUSIVE**

**OFFER**

Starting September 1<sup>st</sup>, exclusively available at all Riverdale Inspiration Shops and Floors in the Netherlands, Belgium, Germany and Estonia (price per unit, while stocks last)

Mug  
from 9,95 now  
**7,95**  
white, 10 cm  
2 dessins

Teabag holder  
from 17,95 now  
**13,95**  
white, set of 4

Tray  
white, 24 cm  
from 11,95 now  
**8,95**  
18 cm, from 7,95 now  
**5,95**

Plan your  
*tea moments...*

**TRAY**  
TEABAG HOLDER - MUG  
**DOTS**





# BEL LOVE DBL UES





# Royal BLUE

Blue is you! For the more daring, blue is the perfect colour to create an aura of power in your interior. Make blue more exotic by combing sapphire with emerald green.

*Golden tip:* embellish the look with gold! Très royale.



① Hurricane Niba blue - 20 cm - 420954 ② Vase Floral blue - 44 cm - 403168 ③ Vase Malika blue - 73 cm - 803723 ④ Chaise longue Chelsea dark blue - 144 cm - 002918\*

\*not available in the United Kingdom



Having the  
royal *blues*.





balance  
 exotic  
 harmony  
 growth  
 connect  
 power  
 pure  
 inspiration  
 nature  
 peacock  
 courage  
 spiritual  
 conscious  
 intense  
 energy  
 feeling





Sapphire and emerald:  
stylish gifts  
from *nature*.



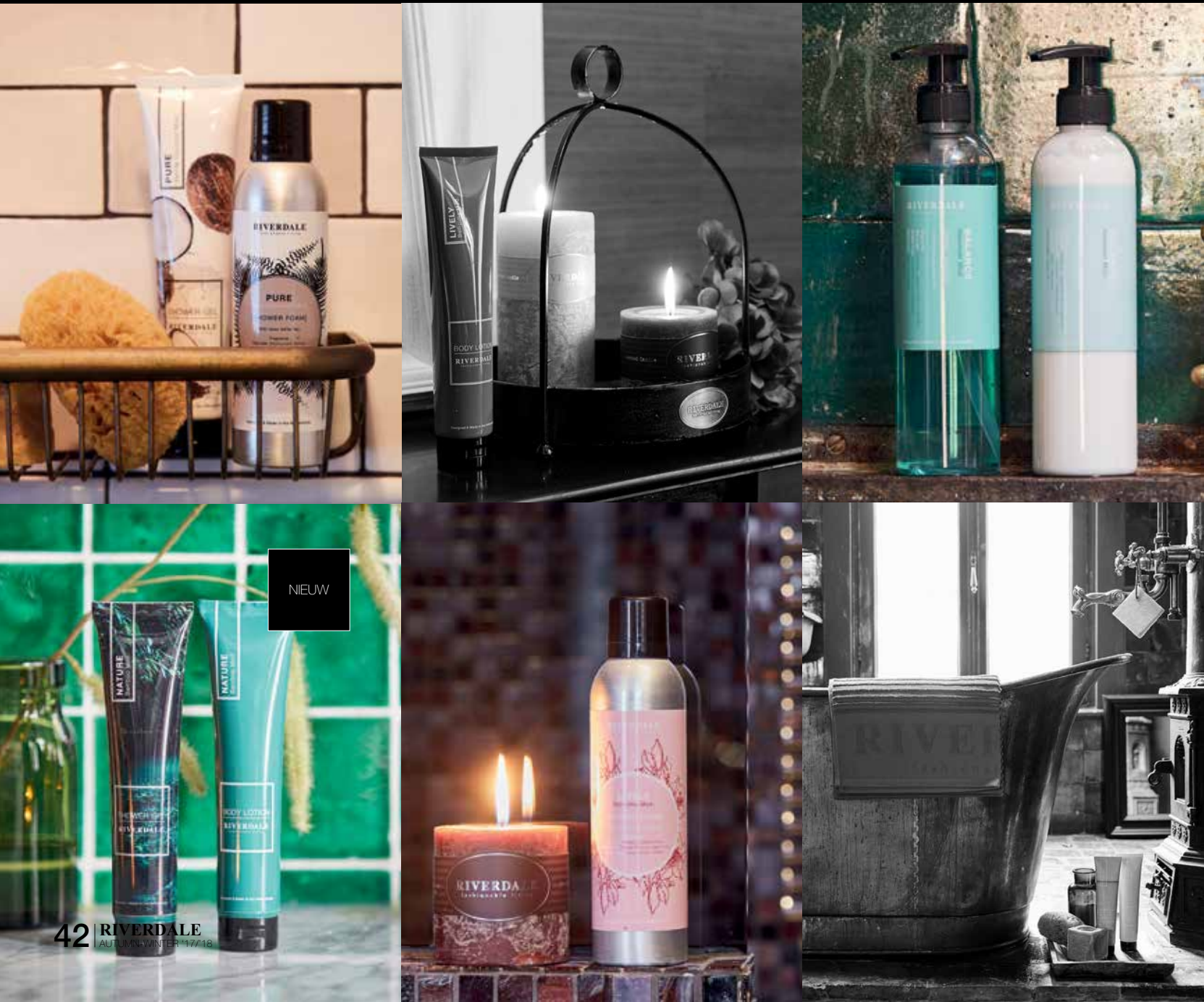


# SPA. COLLECTION

The **SPA.** collection has been created by Riverdale to treat your body and soul with relaxing and nourishing beauty products. For your well-being, every day!



**BAMBOO** is one of the prime ingredients in this new line in the SPA. collection. This series, aptly called Nature, contains a shower foam, handwash, hand lotion, shower gel, and body lotion just like the Lively, Balance, and Pure series. The unisex scent with bergamot, sandalwood, and vanilla is refreshing and leaves your skin feeling soft and nourished.



NIEUW

Shower foam 200 ml - 803100	Shower foam 200 ml - 803200	Shower foam 200 ml - 803300	Shower foam 200 ml - 803500
Hand wash 300 ml - 803102	Hand wash 300 ml - 803202	Hand wash 300 ml - 803302	Hand wash 300 ml - 803502
Hand lotion 300 ml - 803104	Hand lotion 300 ml - 803204	Hand lotion 300 ml - 803304	Hand lotion 300 ml - 803504
Shower gel 200 ml - 803106	Shower gel 200 ml - 803206	Shower gel 200 ml - 803306	Shower gel 200 ml - 803506
Body lotion 200 ml - 803108	Body lotion 200 ml - 803208	Body lotion 200 ml - 803308	Body lotion 200 ml - 803508
Giftset 200 ml - 803110	Giftset 200 ml - 803210	Giftset 200 ml - 803310	Giftset 200 ml - 803510

BALANCE

LIVELY

PURE

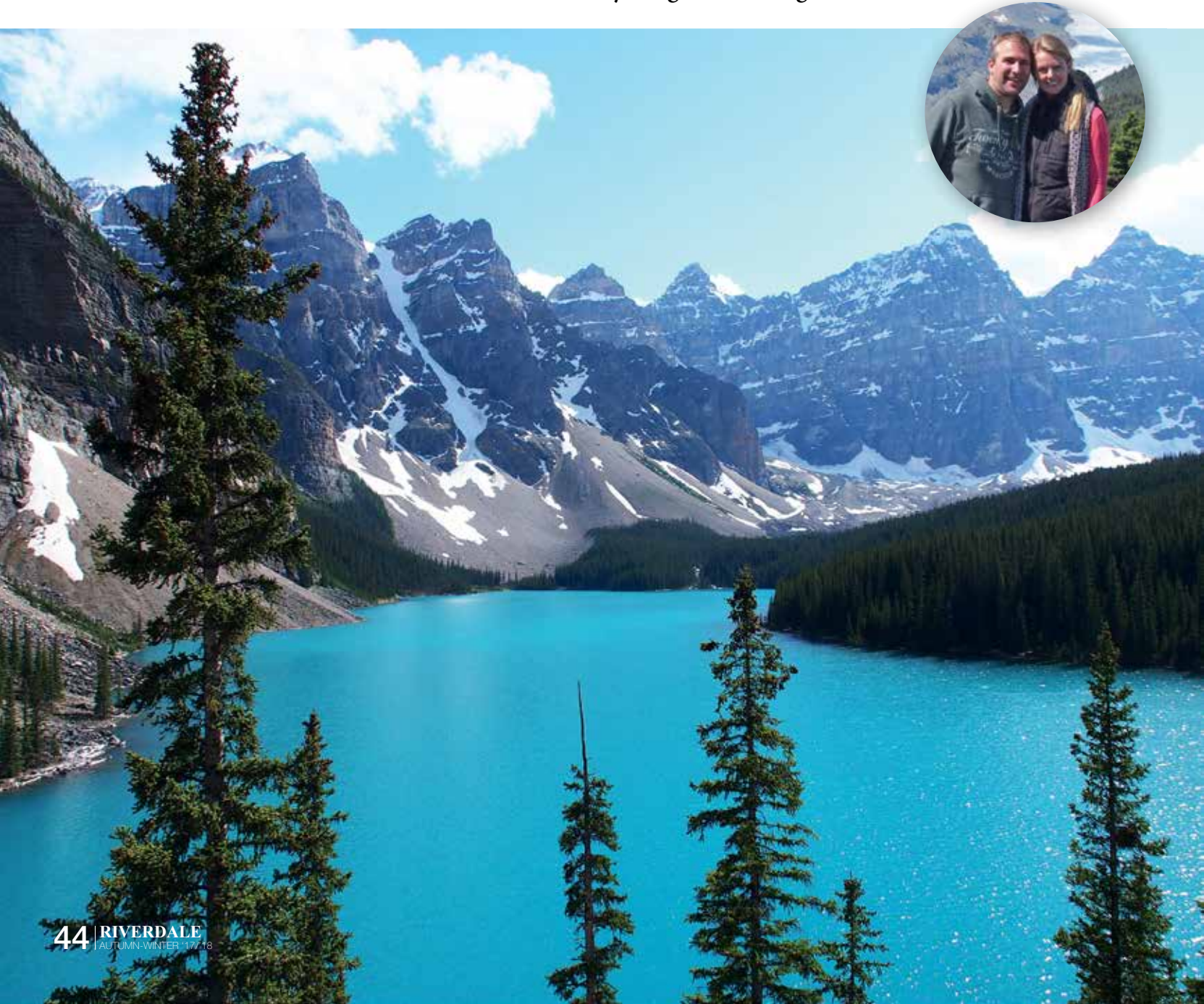
NATURE



# CANADIAN

## r o c k i e s

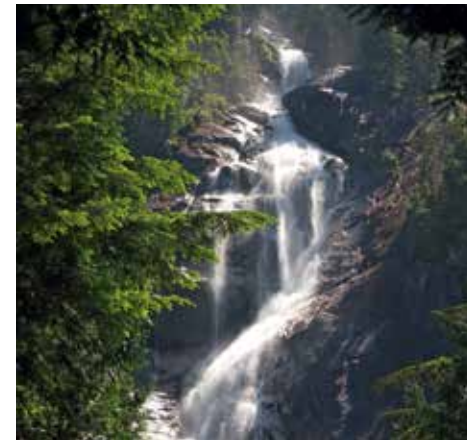
Spectacular and diverse: these two words describe Canada perfectly. The country is carpeted with countless forests, magnificent mountain ranges, breathtaking waterfalls, and sky-blue lakes. Executive assistant Annika Tjassens - van den Berg and her husband Dennis chose this country with its untouched nature - perfect for taking long walks and spotting wild animals - as their honeymoon destination. They travelled to British Columbia and Alberta in the west of Canada and relished in everything that this region has to offer.



An inukshuk is a landmark made of stacked stones in the shape of a person with spread arms. The Inuit used this landmark for navigation. It is symbolic of power, leadership, and motivation.



TRAVEL



Canada stretches across ten million square kilometres, making it 250 times as big as the Netherlands. The country is also sparsely populated with just 35 million residents. The original inhabitants of Canada are the Indians and the Inuit and their influence on the country is still visible to this day. Many of the original geographical names have been kept and the landscape is dotted with totem poles and inuksuit.

Our honeymoon started in Vancouver, a vibrant but compact city where there is much to see and do and the perfect place for us to recover from our jetlag. From there we drove to Vancouver Island, the largest island off the North American west coast. We went on a whale-watching tour off the coast of Victoria, which was the absolute highlight of this part of

the trip. We were amazed watching a large pod of killer whales come by, but were truly blown away when a fifteen-metre long humpback whale passed next to the boat on the way back!

### AT 2,000 METRES ALTITUDE IN SHORTS AND A T-SHIRT.

Whistler, a winter sports village famous for hosting the 2010 Winter Olympics, is a vibrant little tourist centre with beautiful mountain views. Here, at 2,000 metres altitude, we stood in the snow in T-shirts and shorts without feeling cold at all. That was a really unique moment.

As we continued east, we left the cities behind us and approached the Canadian Rocky Mountains, affectionately called 'the Rockies'. In Jasper and Banff National Parks, both World Heritage Sites, we truly experienced the sound of silence. For kilometres we walked in serene silence that was only interrupted by the sound of rushing water and the wind blowing through the treetops. We decided to go rafting on the Sunwapta River, a meltwater river that springs from a glacier. The water temperature was only just above freezing, so we had to make sure that we didn't fall out of the boat!

Our honeymoon was a succession of highlights and absolutely unforgettable. I really recommend a visit to Canada for people who love nature and the outdoors.





good  
**FOOD**  
 is good  
 moola

Nothing reflects autumn better than all the different coloured leaves on the trees. From reddish colours to yellow and brown, autumn has it all! Mother Nature is preparing for the coming winter with shorter, darker, and chillier days. A new season also means making changes to your interior. Autumnal colours create a warm and cosy atmosphere in your home. Introduce these colours not only to your interior but also to the dishes that you make. Not only will you be able to smell the autumn outdoors but will also be able to enjoy the rich fragrances of autumn in your home!



# BLUE BERRY *pie*

**For the dough:**

100 g cold butter, cut into cubes  
5 g sugar  
3 g salt  
plain flour  
75 ml iced water

**For the filling:**

600 g fresh blueberries  
30 g sugar  
30 g cornflour, sifted  
1 extra egg yolk  
sugar to garnish  
15 ml milk  
grated zest and juice of one lemon

**For the dough:**

Mix the flour, salt, and sugar in a food processor. Add the cold cubes of butter and mix once more. Add the iced water a little at a time until the dough sticks together. Wrap the dough in cling film and place in the refrigerator for at least 30 minutes.

**For the filling:**

Preheat the oven to 180°C. Cover the baking tray with baking paper. Mix the blueberries, sugar, lemon juice and zest, and cornflour in a large bowl. Taste the filling to see if it is to your liking and add some extra sugar if it is not sweet enough. Dust some flour onto the worktop. Roll out the dough until the dough is about 5 mm thick. Then mould the dough into the required shape. Try creating a unique shape! Carefully place the dough on the baking tray. Spoon the filling in the centre of the dough, leaving approximately 7 cm free from the edge. Then fold the edges over the filling towards the centre, leaving the filling visible. Brush the dough crust with a mixture of milk and egg yolk and sprinkle the crust with some sugar. Place the baking tray in the oven until the fruit has become soft and the dough is a lovely golden-brown colour. Leave to cool for a short while before serving the pie at room temperature. Delicious served with vanilla ice cream.



# RED salad

This salad is delicious as a meal in itself or it could also be served as a side dish. It makes a lovely combination of flavours, colours, and textures. It definitely looks very appetizing!

**Salad:**

10 purple sprouts, finely chopped  
10 black grapes, halved (e.g. Sable grapes)  
3 purple carrots, peeled and halved  
3 heads of radicchio  
2 beetroots, sliced  
2 plums, thickly sliced  
1 aubergine, sliced  
½ a red cabbage  
20 g pistachios, finely chopped  
100 ml olive oil  
30 ml honey  
pomegranate seeds from half a pomegranate  
salt and pepper

**Salad dressing:**

60 ml olive oil  
30 ml raspberry vinegar  
15 ml honey  
5 g mustard  
1 clove of garlic, finely chopped  
salt and pepper

Preheat the oven to 200°C. Cover a baking tray with aluminium foil and lightly grease with olive oil. Place the chopped carrots, aubergine, red cabbage, purple sprouts, radicchio, beetroots, grapes, and plums on the baking tray. Drizzle olive oil over the vegetables and season to taste with salt and pepper. Also drizzle some honey over the carrots, sprouts, and radicchio. Place the baking tray in the centre of the oven and bake for approximately 30 to 40 minutes. Serve the salad in a pretty dish and garnish with pistachios and pomegranate seeds. Drizzle over the salad dressing.



# SALMON BURGERS

WITH A SPICY  
*mayonnaise*

**Salmon burgers:**

400 g fillets of salmon, skinned and chopped  
30 g mixed lettuce  
20 g fresh coriander  
15 g jalapeños from a jar  
5 g garlic powder  
1 red onion, chopped  
4 white sesame seed rolls  
½ cup bread crumbs (such as Panko)  
salt and pepper

**Spicy mayonnaise:**

10 g jalapeños from a jar, chopped  
150 ml mayonnaise  
lime zest  
salt and pepper

Start by making the spicy mayonnaise. Mix all the ingredients together in a food processor and purée to a smooth consistency. Set aside the mayonnaise in a dish. Clean the food processor before making the salmon burgers. Mince the chopped salmon in the food processor. Add the jalapeños, red onion, fresh coriander, and garlic powder. Add salt and pepper to taste. Then add the bread crumbs and a tablespoon of spicy mayonnaise and mix everything well. Add some more mayonnaise until the mixture sticks together. Shape the mixture into neat salmon burgers and allow them to rest in the refrigerator for a short while. Fry the salmon burgers in a hot frying pan with olive oil until the burgers have a nice thick brown crust. Serve each burger on a white sesame seed roll topped with spicy mayonnaise, mixed lettuce, and fresh red onion.







# HEARTY LENTIL Soup

Lentils are available in abundance all year round! Lentils used to be regarded as food for the poor, but they have been making a comeback and are now being served in the more expensive restaurants. Lentils have become a staple ingredient and can be added to almost anything like salads, soups, or stews. Not only are these pulses really rather tasty, but they are also packed full of vitamin B, proteins, and iron.

250 g ham on the bone  
200 g lentils  
50 g kale, finely chopped  
10 g butter  
3 carrots, chopped  
3 stalks of celery, chopped  
3 cloves of garlic, finely chopped  
2 white onions, finely chopped  
½ tsp thyme  
½ tsp rosemary  
½ tsp oregano  
½ tsp dried chilli rings  
2 l vegetable stock  
1 tin of diced tomatoes  
15 ml olive oil  
salt and pepper

Heat the olive oil and butter in a soup pan. Fry the onion, carrots, and celery until translucent. Add the crushed garlic and continue frying. Then add the thyme, rosemary, oregano, and chilli rings and, lastly, the lentils, vegetable stock, and diced tomatoes. Leave the mixture to simmer for 30 minutes until the lentils are cooked. In the meantime, cut the ham and fry in a frying pan. When the mixture has simmered for around 30 minutes and the lentils are done, add the ham. Add a little salt and pepper to taste. Stir the kale into the soup just before serving. Serve the dish with freshly baked bread, butter, and coarse salt.



# OVEN ROASTED chicken

This recipe makes a juicy and aromatic roast chicken. Serve this dish to impress your guests or family. The advantage of this recipe is that it is quite easy to make but it looks very impressive!

1 whole organic chicken  
180 g butter, room temperature  
40 g fresh rosemary  
3 sweet potatoes, skin left on and chopped into chips  
3 potatoes, skin left on and chopped into chips  
3 onions, quartered  
zest of 3 lemons and the lemons are halved  
1 head of garlic, halved  
salt  
freshly ground pepper  
250 ml white wine

Preheat the oven to 200°C. Mix together the butter, lemon zest, salt, pepper, and fresh rosemary. Pat the chicken dry with kitchen towels. Carefully loosen the skin of the chicken breast making sure the skin remains intact. Once the skin is loose, rub the butter mixture under the skin. Rub the rest of the butter mixture onto the outside of the chicken. Place half a lemon and some fresh rosemary into the cavity. Close the cavity by tying together the legs with kitchen string. Place the onion quarters, garlic halves, lemons, potatoes, and sweet potatoes in a casserole dish. Add the white wine and place the chicken on top. Place the casserole dish in the oven and cook the chicken at 200°C for 30 minutes. Then turn the oven down to 140°C and cook the dish for another one and a half hours until the juice from the chicken runs clear. Serve the chicken with black beans or green vegetables such as broccoli, spinach, or French beans.







# TASTE. COLLECTION

All the ingredients for a wonderful meal...

[delicious food] a meal to treat your senses - taste and smell it [beautifully set table] a delightfully decorated table with beautiful tableware, cutlery and candlelight [family & friends] people you love and enjoy spending time with.



# FASHIONABLE COOKING



TASTE. collection



① Dish Bloom Blue 10 cm - 400210 ② Bowl Bloom Blue 12 cm - 400212 ③ Bowl Bloom Blue 16 cm - 400214 ④ Bowl Bloom Blue 21 cm - 400216 ⑤ Plate Bloom Blue 18 cm - 400204 ⑥ Plate Bloom Blue 22 cm - 400206 ⑦ Plate Bloom Blue 27 cm - 400208 ⑧ Mug Bloom Blue 8 cm - 400200 ⑨ Mug Bloom Blue 10 cm - 400202 ⑩ Dish Bloom Blue 9 cm - 400222 ⑪ Dish Bloom Blue 12 cm - 400224 ⑫ Bowl Bloom Blue rectangular - 22 cm - 400226 ⑬ Bowl Bloom Blue rectangular - 31 cm - 400228 ⑭ Plate Bloom Blue square - 20 cm - 400218 ⑮ Plate Bloom Blue square - 26 cm - 400220



① Dish Floral Blue 10 cm - 400240 ② Bowl Floral Blue 12 cm - 400242 ③ Bowl Floral Blue 16 cm - 400244 ④ Bowl Floral Blue 21 cm - 400246 ⑤ Plate Floral Blue 18 cm - 400234 ⑥ Plate Floral Blue 22 cm - 400236 ⑦ Plate Floral Blue 27 cm - 400238 ⑧ Mug Floral Blue 8 cm - 400230 ⑨ Mug Floral Blue 10 cm - 400232 ⑩ Dish Floral Blue 9 cm - 400252 ⑪ Dish Floral Blue 12 cm - 400254 ⑫ Bowl Floral Blue rectangular - 22 cm - 400256 ⑬ Bowl Floral Blue rectangular - 31 cm - 400258 ⑭ Plate Floral Blue square - 20 cm - 400248 ⑮ Plate Floral Blue square - 26 cm - 400250



① Bowl Leaves Blue 12 cm - 400028 ② Bowl Leaves Blue 16 cm - 400030 ③ Bowl Leaves Blue 21 cm - 400032 ④ Storage jar Leaves Blue 17 cm - 400162 ⑤ Storage jar Leaves Blue 21 cm - 400164 ⑥ Plate Leaves Blue 22 cm - 400036 ⑦ Plate Leaves Blue 27 cm - 400038 ⑧ Dish Leaves Blue 10 cm - 400034 ⑨ Bowl Leaves Blue rectangular - 22 cm - 400040 ⑩ Mug Leaves Blue 8 cm - 400060 ⑪ Mug Leaves Blue 10 cm - 400062 ⑫ Jumbo mug Leaves Blue 13 cm - 400176 ⑬ Tea time Leaves Blue giftbox 22 cm - 400056 ⑭ Bowl Leaves Blue 9 cm - 400170 ⑮ Bowl Leaves Blue 13 cm - 400172 ⑯ Bowl Leaves Blue 16 cm - 400174 ⑰ Salad bowl Leaves Blue 29 cm - 400064

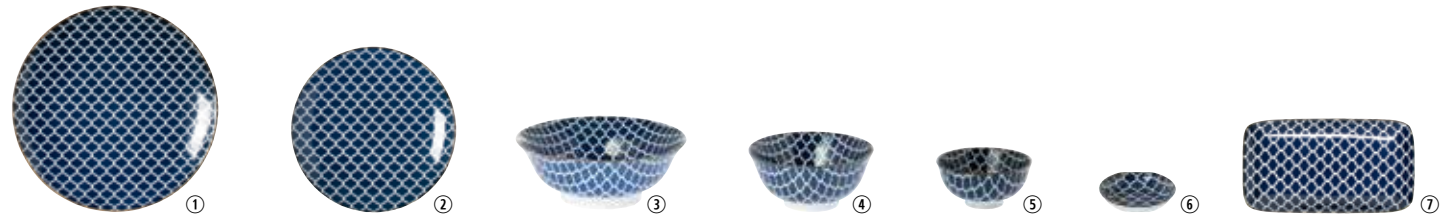




① Plate Stripes Blue 26 cm - 400010 ② Plate Stripes Blue 22 cm - 400008 ③ Bowl Stripes Blue 21 cm - 400004 ④ Bowl Stripes Blue 16 cm - 400002 ⑤ Bowl Stripes Blue 12 cm - 400000  
⑥ Dish Stripes Blue 10 cm - 400006 ⑦ Teaspoons Blue in giftbox s/6 14 cm - 400144 ⑧ Plate Stripes Blue rectangular - 22 cm - 400012



① Plate Dots Blue 26 cm - 400024 ② Plate Dots Blue 22 cm - 400022 ③ Bowl Dots Blue 21 cm - 400018 ④ Bowl Dots Blue 16 cm - 400016 ⑤ Bowl Dots Blue 12 cm - 400014 ⑥ Dish Dots Blue 10 cm - 400020 ⑦ Plate Dots Blue rectangular - 22 cm - 400026



① Plate Fantasy Blue 26 cm - 400082 ② Plate Fantasy Blue 22 cm - 400080 ③ Bowl Fantasy Blue 21 cm - 400076 ④ Bowl Fantasy Blue 16 cm - 400074 ⑤ Bowl Fantasy Blue 12 cm - 400072  
⑥ Dish Fantasy Blue 10 cm - 400078 ⑦ Plate Fantasy Blue rectangular 22 cm - 400084



① Mug Flower Blue 8 cm - 400066 ② Mug Flower Blue 10 cm - 400068 ③ Plate Flower Blue rectangular - 22 cm - 400054 ④ Salad Bowl Flower Blue 29 cm - 400070 ⑤ Plate Flower Blue 26 cm - 400052  
⑥ Plate Flower Blue 22 cm - 400050 ⑦ Bowl Flower Blue 21 cm - 400046 ⑧ Bowl Flower Blue 16 cm - 400044 ⑨ Bowl Flower Blue 12 cm - 400042 ⑩ Dish Flower Blue 10 cm - 400048 ⑪ Tea time Flower Blue giftbox 22 cm - 400058



① Dish Lines Blue 10 cm - 400098 ② Mug Lines Blue 8 cm - 400106 ③ Mug Lines Blue 10 cm - 400108 ④ Plate Lines Blue rectangular - 22 cm - 400104 ⑤ Plate Lines Blue 26 cm - 400102  
⑥ Plate Lines Blue 22 cm - 400100 ⑦ Bowl Lines Blue 21 cm - 400096 ⑧ Bowl Lines Blue 16 cm - 400094 ⑨ Bowl Lines Blue 12 cm - 400092 ⑩ Storage jar Lines Blue 17 cm - 400166  
⑪ Storage jar Lines Blue 21 cm - 400168





# #LOVE TO COOK



① Tea pot Metz grey - 18 cm - 402102 ② Mug Metz grey - 11 cm - 402100 ③ Mug Metz grey - 13 cm - 402101 ④ Tea tip Metz grey - 9 cm - 402105 ⑤ Bowl Metz grey - 19 cm - 402106 ⑥ Bowl Metz grey - 26 cm - 402107 ⑦ Bowl Metz grey - 32 cm - 402108 ⑧ Bowl Metz grey - 33 cm - 402110 ⑨ Breakfast plate Metz grey - 22 cm - 402103 ⑩ Dinner plate Metz grey - 28 cm - 402104



① Jumbo Mug Noodles white - 14 cm - 402324 ② Jumbo Mug Soup white - 14 cm - 402322 ③ Jumbo Mug Love white - 14 cm - 402320 ④ Jumbo Mug Tea white - 14 cm - 402318 ⑤ Mug Mini Flower white - 9 cm - 402220 ⑥ Mug Flower white - 10 cm - 402222 ⑦ Tea pot Flower white - 24 cm - 402230 ⑧ Breakfast plate Flower white - 22 cm - 402226 ⑨ Dinner plate Flower white - 27 cm - 402230



① Cup & saucer Espresso white - 11 cm - 402312 ② Cup & saucer Coffee white - 15 cm - 402314 ③ Cup & saucer Tea white - 18 cm - 402316 ④ Mug mini Love white - 9 cm - 402326 ⑤ Mug mini Coffee white - 9 cm - 402328 ⑥ Mug Mini Delicious white - 9 cm - 402232 ⑦ Mug Delicious white - 10 cm - 402234 ⑧ Tea pot Delicious white - 24 cm - 402242 ⑨ Dish Delicious white - 15 cm - 402236 ⑩ Dinner plate Delicious white - 27 cm - 402240



① Mug Pure Blue - 8 cm - 402052 ② Cup & saucer Pure Blue - 6 cm - 402050 ③ Bowl Pure Blue - 10 cm - 402062 ④ Bowl Pure Blue - 16 cm - 402064 ⑤ Bowl Pure Blue - 23 cm - 402066 ⑥ Tea pot Pure Blue - 15 cm - 402054 ⑦ Plate Pure Blue - 13 cm - 402056 ⑧ Plate Pure Blue - 20 cm - 402058 ⑨ Plate Pure Blue - 27 cm - 402060



① Tea glass double wall Tea time clear - 11 cm - 417054 ② Tea glass + holder Tea time clear - 12 cm - 417053 ③ Decanter Delicious clear - 16 cm - 417049 ④ Decanter Taste clear - 25 cm - 417050 ⑤ Decanter Taste clear - 22 cm - 417051 ⑥ Decanter Brighton clear - 36 cm - 308028 ⑦ Wine cooler Taste clear - 21 cm - 417052



① Storage jar Salt clear - 18 cm - 417002 ② Storage jar Pepper clear - 18 cm - 417004 ③ Storage jar Herbs clear - 18 cm - 417000 ④ Storage jar Coffee clear - 24 cm - 417006 ⑤ Storage jar Tea clear - 24 cm - 417008 ⑥ Storage jar Sugar clear - 24 cm - 417010 ⑦ Storage jar Biscuits clear - 28 cm - 417012 ⑧ Storage jar Cereals clear - 28 cm - 417014 ⑨ Storage jar Cookies clear - 34 cm - 417016





Cooking shows have been a staple of prime time television for years now, and magazines and newspapers have featured mouth-watering recipes for equally as long; from oatmeal cookies with goji berries to vegetable mashes with a modern twist and the tastiest Italian pizzas: we love to cook! And there's nothing better than cooking up a storm in a kitchen that suits you perfectly.

## WE LOVE COOKING!

Together with our specialised kitchen partners, we designed the quintessential Riverdale kitchen that reflects the latest kitchen trends.

These kitchens are available from a wide range of dealers. We have the perfect Riverdale kitchen to suit any budget. From luxury built-in appliances and custom-made countertops to a wide range of cupboard styles: Riverdale has it all! Our kitchens are available in different colours: white, natural and black. Riverdale offers three quality levels. Our 'Selected By' option is by far the most popular thanks to its attractive price. If you're looking for a high-end kitchen made from durable wood, opt for 'The Original'. This kitchen even bears the FSC/PEFC quality trademark, which is extremely unique in the world of kitchens! Finally, we also offer 'The Natural': a kitchen made from lacquered oak veneer with a visible wood grain that gives the kitchen a cool and contemporary finish.



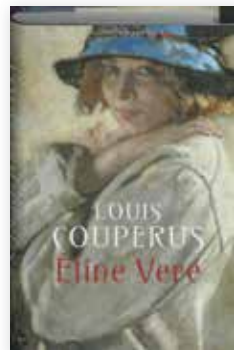
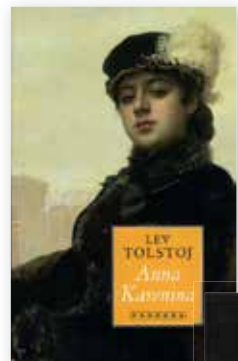


## NOIR et... rouge

SAM HANSEN, HEAD OF STYLING & DESIGN, PARTNER LOUIS, AND THE KIDS STIJN AND COOSJE. AS A FAN OF EVERYTHING TO DO WITH INTERIORS AND FASHION, I TRAVEL TO THE MOST INSPIRING PLACES. I LOVE SHARING THESE AWESOME MOMENTS WITH YOU! YOU CAN FOLLOW ME ON INSTAGRAM @RIVERDALE.STYLISHMETSAM

## literature

Always books. No e-reader for me. Books are a common theme in this issue and in previous issues of this magazine. I adore them. You simply have to read the classics like Anna Karenina, Eline Vere, Madame Bovary, Paula McLain, and Jane Eyre.



## Skin

KIEHL'S precision lifting & pore-tightening  
 COLLISTAR from anti-ageing cream to scrub and body lotion  
 SENSAT cleanser & night cream with silk  
 ELIZABETH ARDEN eight hour cream  
 LOUIS WIDMER day cream with SPF  
 NUXE the iconic Nuxe oil

## HAIR

MOROCCANOIL,  
 BIOSILK,  
 OLAPLEX,  
 FUDGE CLEAN BLONDE,  
 BLACK HAIRBAND

## FASHION

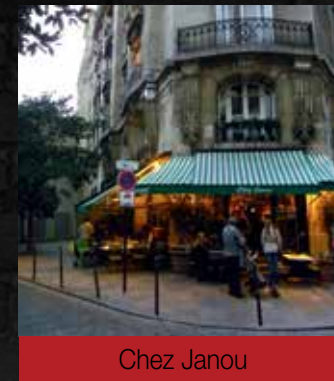
Black jeans by Acne Studios, Black dress by Filippa K, Black heels by Dune, Black shirt & coat by H&M

## MAKE UP

YSL FOUNDATION, LAURA MERCIER BLUSH, LIP GLOSS CHANEL NO. 206 OR EYE SHADOW CHANEL NO. 246



## RESTAURANTS



Chez Janou

**PARIS** The location is stunning. It's as if you're on a film set. Drinks with the locals. Je t'aime!



Mama Kelly

**THE HAGUE** Just around the corner and one of the coolest decorated restaurants that I have seen.



Café Saint Régis

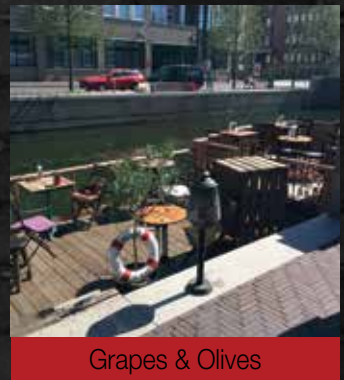
**PARIS** I have to eat the salmon burger at least twice a year, or else... And I'll walk of those calories anyway. Notre Dame is just 300 metres down the road.



C

**AMSTERDAM** C for Celsius. It's not just about the product but rather about how it's prepared. My interior was inspired by this restaurant. It's a great place.

**THE HAGUE** My favourite DJ Record Jack, great wines, and snacks The local of my friend Eveline and moi



Grapes & Olives

## FILMS

1990



ROMANTIC

1996



BEAUTIFUL

2001



INNOCENT

2015



HILARIOUS

2016



FUNNY

One of my favourite things to do is an evening on the couch watching one of these classic films. Some movies are perfect for watching with my best friend, others with the hubby. But I can enjoy watching a film by myself just as well. I'll be back! (that's actually not one of my favourites...)



EXCLUSIVE

OFFER

Starting September 1<sup>st</sup>, exclusively available at all Riverdale Inspiration Shops and Floors in the Netherlands, Belgium, Germany and Estonia (price per unit, while stocks last)

from 17,95 now  
**14,95**  
Available in:  
Pure Silk, Marvelous Morning,  
Rose & Tea,  
Blueberry Blend  
100 ml



# DIFFUSER MOOD





# LIGHT. COLLECTION

The **LIGHT.** collection has been created by Riverdale to make sure that all the beautiful spaces in your home are enlightened by fabulous lighting products.



# BRIGHT POINTS

LIGHT. collection



GO ROUND

① Lamp hanging Midar gold - 29 cm - 002274 ② Lamp hanging Midar gold - 35 cm - 002275 ③ Lamp hanging Midar gold - 40 cm - 002276 ④ Lamp hanging Midar gold - 46 cm - 002277 ⑤ Lamp hanging Riom natural - 25 cm - 309500 ⑥ Lamp hanging Riom natural - 68 cm - 309504 ⑦ Lamp hanging Riom natural - 92 cm - 309506 ⑧ Lamp hanging Vernon clear - 26 cm - 421628 ⑨ Lamp hanging Alton silver - 22 cm - 421746 ⑩ Lamp hanging Alton silver - 27 cm - 421748 ⑪ Lamp hanging Alton silver - 32 cm - 421750 ⑫ Lamp hanging Vernon grey - 26 cm - 421638 ⑬ Lamp hanging Alton black - 22 cm - 421752 ⑭ Lamp hanging Alton black - 27 cm - 421754 ⑮ Lamp hanging Alton black - 32 cm - 421756 ⑯ Lamp hanging Milton bronze - 39 cm - 309232



50 possibilities

# MIX & MATCH

LIGHT. collection



① Lamp base Saintes white - 37 cm - 402408 ② Lamp base Saintes white - 46 cm - 402410 ③ Lamp base Saintes beige - 37 cm - 402414 ④ Lamp base Saintes beige - 46 cm - 402416 ⑤ Lamp base Saintes brown - 37 cm - 402496 ⑥ Lamp base Saintes brown - 46 cm - 402497 ⑦ Lamp base Saintes dark grey - 37 cm - 402498 ⑧ Lamp base Saintes dark grey - 46 cm - 402499 ⑨ Lamp base Chelsea natural - 44 cm - 008192 ⑩ Lamp base Chelsea natural - 54 cm - 008194 ⑪ Shade Bliss beige - 35x35 cm - 909233 ⑫ Shade Berkeley grey - 35x35 cm - 909234 ⑬ Shade Bliss mint - 35x35 cm - 909235 ⑭ Shade Royal black/silver - 35x35 cm - 909236 ⑮ Shade Royal black/gold - 35x35 cm - 909238

① Lamp hanging Vernon clear - 24 cm - 421620 ② Lamp hanging Vernon clear - 21 cm - 421622 ③ Lamp hanging Vernon clear - 22 cm - 421624 ④ Lamp hanging Vernon clear - 28 cm - 421626 ⑤ Lamp hanging Vernon smoke - 24 cm - 421630 ⑥ Lamp hanging Vernon smoke - 21 cm - 421632 ⑦ Lamp hanging Vernon smoke - 22 cm - 421634 ⑧ Lamp hanging Vernon smoke - 28 cm - 421636 ⑨ Lamp hanging Milton white - 29 cm - 309234 ⑩ Lamp hanging Milton white - 35 cm - 309236 ⑪ Lamp hanging Milton white - 51 cm - 309238 ⑫ Lamp hanging Milton white - 39 cm - 309240 ⑬ Lamp hanging Milton silver - 29 cm - 309206 ⑭ Lamp hanging Milton silver - 35 cm - 309208 ⑮ Lamp hanging Milton silver - 51 cm - 309210 ⑯ Lamp hanging Milton silver - 39 cm - 309212





Only for rugged  
*adventurers*  
and mess-makers.



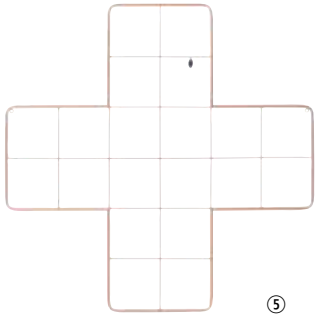


# BO. COLLECTION

The **BO.** collection has been carefully designed and created with lots of love to make a very happy and inspiring home for every child.



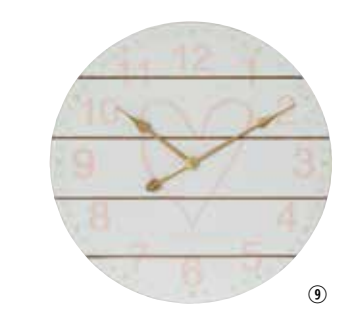
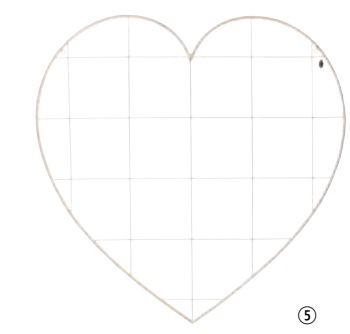
Every item is a  
**winner!**



① Basket Vintage s/2 - natural - 78 cm - 202447 ② Basket Bo. s/3 - green - 48 cm - 002332 ③ Lamp Star white - 31 cm - 003508 ④ Frame Boy brown - 10x15 cm - 003304 ⑤ Wall rack Cross bronze - 100 cm - 008185 ⑥ Text plate Team dark blue - 60 cm - 005441 ⑦ Heart Boy blue - 16 cm - 404631 ⑧ Airplane Vintage silver - 39 cm - 450244 ⑨ Wall clock Cool dark grey - 38 cm - 004872 ⑩ Plaid Boy blue - 120x150 cm - 003313 ⑪ Bear Teddy sitting - brown - 51 cm - 460546 ⑫ Table clock Camden blue - 24 cm - 003702 ⑬ Magazine holder Cool natural - 36 cm - 006007 ⑭ Fauteuil Mini black - 67 cm - 002923 ⑮ Cushion Cross grey - 45x45 cm - 301610 ⑯ Cushion No.1 blue - 40x70 cm - 360474 ⑰ Duvet 1-p Team blue - 140x200/220 cm - 803038



# Wish list girls just wanna have...



① Basket Vintages s/2 white - 78 cm - 202448 ② Basket Bo. s/3 - pink - 48 cm - 002328 ③ Lamp base Chelsea natural - 34 cm - 008190 ④ Shade Bo light pink - 27x27 cm - 909250 ⑤ Frame Girl brown - 10x15 cm - 003303 ⑥ Wall rack Heart gold - 100 cm - 008184 ⑦ Text plate Flower pink - 60 cm - 005439 ⑧ Heart Girl pink - 16 cm - 404629 ⑨ Table clock Bo pink - 24 cm - 003700 ⑩ Wall clock Heart white - 38 cm - 004871 ⑪ Plaid Girl pink - 120x150 cm - 003311 ⑫ Bear Teddy sitting - grey - 51 cm - 460540 ⑬ Basket Storage s/3 pink - 52 cm - 002316 ⑭ Magazine holder Flower white - 36 cm - 006234 ⑮ Rug Flower pink - 120 cm - 360482 ⑯ Cushion Girl pink - 45x45 cm - 003310 ⑰ Cushion Star white - 45x45 cm - 363006 ⑱ Duvet 1-p Heart white - 140x200/220 cm - 803036





# BEHIND THE SCENES



It's freezing,  
it's chaotic,  
but it's  
*fantastic*



Cushion  
by  
Tamara



Meet  
the  
*models*



A car full of  
*wannahaves*

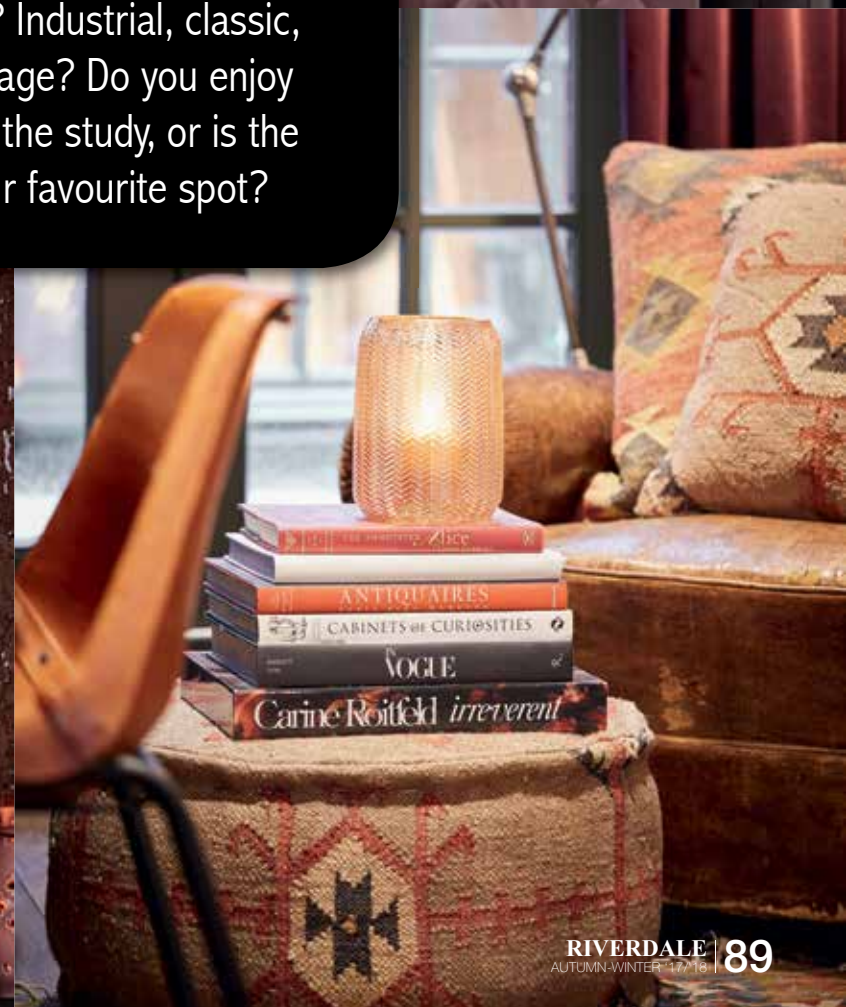






# STYLE HOROSCOPE

Which home and living style suits your personality? Industrial, classic, romantic, or vintage? Do you enjoy spending time in the study, or is the living room your favourite spot?





# INDUSTRIAL

ARIES, VIRGO & AQUARIUS



**The industrial style is characterized by sleek lines and finishings. Concrete, metal, and glass are the dominant materials, and black, white, and grey with just a few bright colour accents are the popular colours for this style. There are few accessories with just a couple of eye-catching elements.**

ARIES

Aries is an individualist and decides for themselves what they like or don't like. You don't need someone to tell you what to think. You have lots of ideas, are brave, and pioneering. Your home and living style is a little more daring and you are so innovative that you are often miles ahead of trends. You are, in fact, a trendsetter. You like sleek lines, high ceilings, and large windows. You prefer white to black but also like including a few bright colours in your interior.

VIRGO

Virgo is practical, organized, and precise. The minimalistic aspect of the industrial style appeals to you. With your pragmatic approach you create an interior that is easy to maintain. Smooth surfaces made of plastics and glass and a tile floor are perfect for you. You prefer shades of grey. With your eye for detail you know exactly which elements to add to your interior to create a sleek yet personal, completely perfect effect.

AQUARIUS

Aquarius does not conform to standards. You actually love being different to everyone else. You're original and revolutionary. You like materials such as concrete and metal, and you love black floors, walls, and furniture. You look for unique buildings, old factories, or schools and transform them into loft-like spaces that exude a sense of space. The last thing you want is for the walls to close in on you and to feel trapped in your own home.

# Classic

LEO, SCORPIO & CAPRICORN



**The classic interior style is dignified and elegant. It is defined by luxury materials, leather, and polished wood and by colours like black, grey, brown, and Plateaux. Heirlooms are given a place of honour, chandeliers grace the ceilings, and wall panelling and wallpaper with a velvet print are essential.**

LEO

Leo is not about understatement. You like to be noticed and the interior of your home presents the perfect opportunity to flaunt your wealth. But it's not gaudy. After all, you do have a great sense of style. You choose elegance, comfort, and luxury. You adore marble floors, a fireplace, soft leather sofas, heavy velvet curtains, stained glass windows, and mirrors in ornamental frames. Because you are warm and openhearted you always go for warm colours.

SCORPIO

Scorpio is all about authenticity. You don't tolerate fakes or imitations. You're ambitious and like to show off. You choose expensive antique elements, padded chairs and sofas, herringbone parquet floors, and a living room with sliding doors. While you're strong and come across as such, you are also sensitive and tender, so you feel the need to create your own special place in your home.

CAPRICORN

Capricorn is very aware of status. You work hard to position yourself in society and to reach the top. You need a grand home - a home that exudes wealth - but frugal as you are, you try to make a deal wherever you can. You are conservative and you value tradition, so you treasure your heirlooms. The perfect piece would be an antique desk that once belonged to your great-grandfather while Persian carpets are a must.

TAURUS

Taurus is calm and quiet. Yet, your home might not exude the tranquility of your personality. It could be filled with bits and bobs because you like things and Taurus individuals are collectors by nature. A display cabinet filled with trinkets and decorative items, cabinets, chairs, and tables are likely to be found in your home because you like to buy things, but won't get rid of anything. Your walls are covered in anything from wall decals to valuable paintings and your windowsills are decorated with plants.

LIBRA

Libra searches for harmony and balance in people, and in shapes and colours. You're friendly and charming and these characteristics are reflected in your home. You like soft shades of pastel, and pink is one of your favourite colours. You have a soft fabric sofa, carpets on the floor, and cushions in matching colours. You love having beautiful pieces of art on your walls and on your sideboards. Everything in your home is balanced, matched, and perfectly coordinated.

PISCES

Pisces is gentle, soft, and sensitive to their surroundings. In your own home you try to create the perfect atmosphere, although it might take a while before you discover the style that suits you best. Chances are that you'll love a romantic style, with lots of little things like photo frames, vases, and tea sets. At first sight, your home might seem a little chaotic but if you look closely you can see the method behind the madness.

GEMINIS

Geminis are fast-thinking, smart, and versatile and it's important to them to be social. That's why your house is designed to receive guests. Your home will have a large dining table, preferably a wooden one, and a spacious seating area is a must. You have a lot of stuff that you store in cupboards with many drawers. You're not too fussy about style and like retro, modern, or even antique designs. But what you are particular about are your bookcases. Your walls are covered with them.

CANCERS

Cancers are real homebodies. Your home is the place where you want to feel safe and protected and want to make others feel at home too. Comfort and homely are two words that describe your style. You love wood and natural, soft colours. You want to place emphasis on a few items that have personal value, and on art that you or a family member has created. Everything that inspires a sense of nostalgia is special to you, like a little antique table, or an old sewing table.

SAGITTARIUS

Sagittarius is not concerned with material wealth. You often don't even care what your house looks like and it's likely to be a collection of things you've scraped together over the years. But you do prefer a natural look: one that exudes being down to earth and straightforward. You'd rather have few items in your home than too many and you love rustic materials, tiled floors, and sturdy wood-burning stoves. You buy second-hand furniture, because you like the idea of giving things a new purpose.

# Romantic

TAURUS, LIBRA & PISCES



**The romantic style is warm and feminine. Soft textiles and materials and shades of pastel are key. It's defined by an abundance of accessories, antique items, textile lampshades, display cabinets, photo frames, floral designs, cushions, and rugs.**

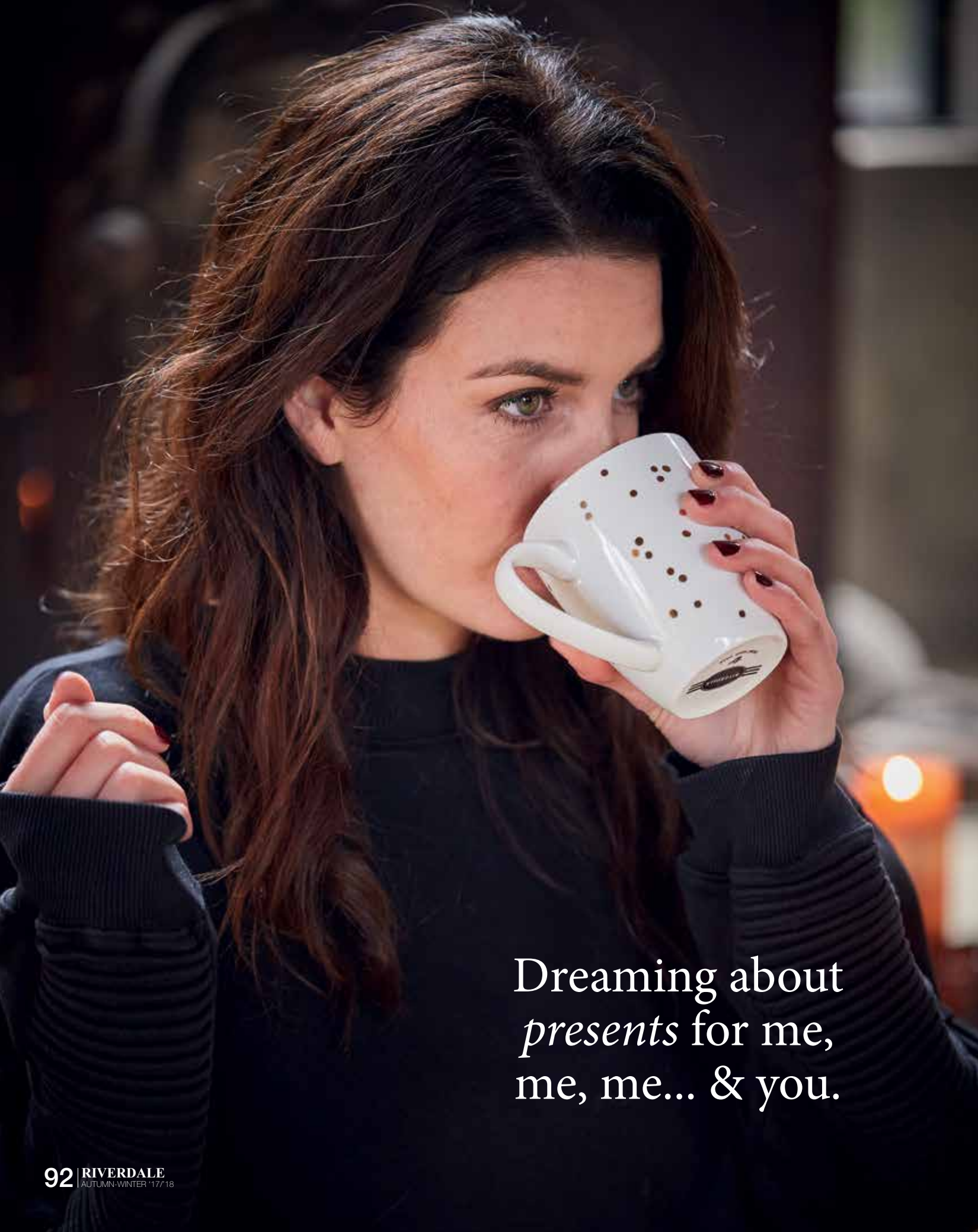
# VINTAGE

GEMINIS, CANCERS & SAGITTARIUS



**A vintage style is cool and straightforward and uses a lot of unprocessed wood. The colours are less important than the furniture itself which are often key pieces that could come from antique shops or even second-hand shops. Apothecary cabinets and old school benches are highly-prized display pieces.**





# I'm so excited...

Be amazed every month!



The Monthly Must-Have has a limited availability and can only be found at a selected number of points of sale. Find your nearest point of sale on [riverdale.nl](http://riverdale.nl).

Dreaming about *presents* for me, me, me... & you.





**EXCLUSIVE**

**OFFER**

Starting September 1<sup>st</sup>, exclusively available at all Riverdale Inspiration Shops and Floors in the Netherlands, Belgium, Germany and Estonia (price per unit, while stocks last)

from 35,00 now

**29,95**

Available in:  
beige & brown  
22 cm

from 12,95 now

**9,95**

Available in:  
beige & brown  
14 cm

from 19,95 now

**16,95**

Available in:  
beige & brown  
16 cm

# HURRICANE ROYAL



# *All natural* **& BLACK**

*The beating heart of an elegant  
and timeless interior.*





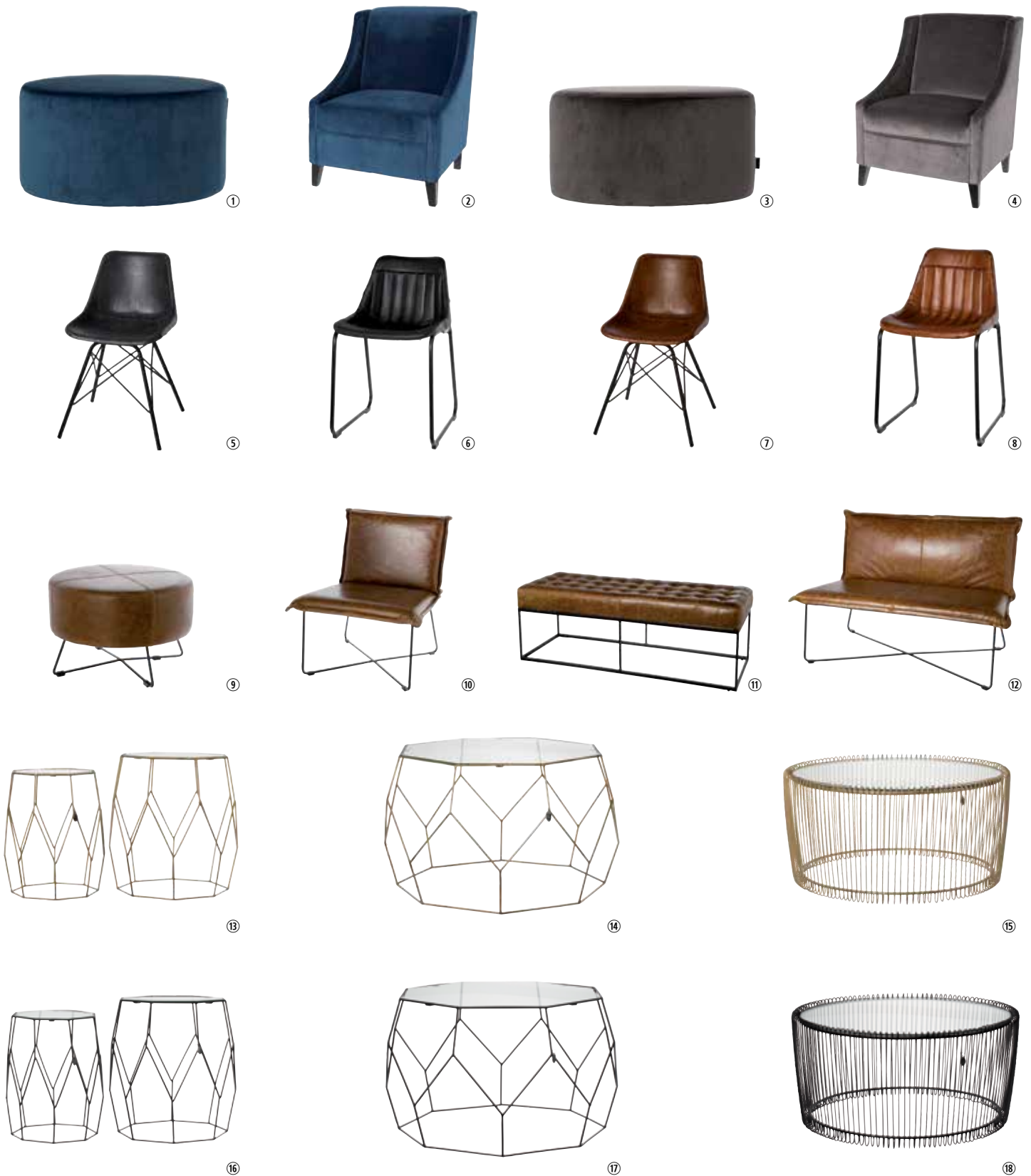
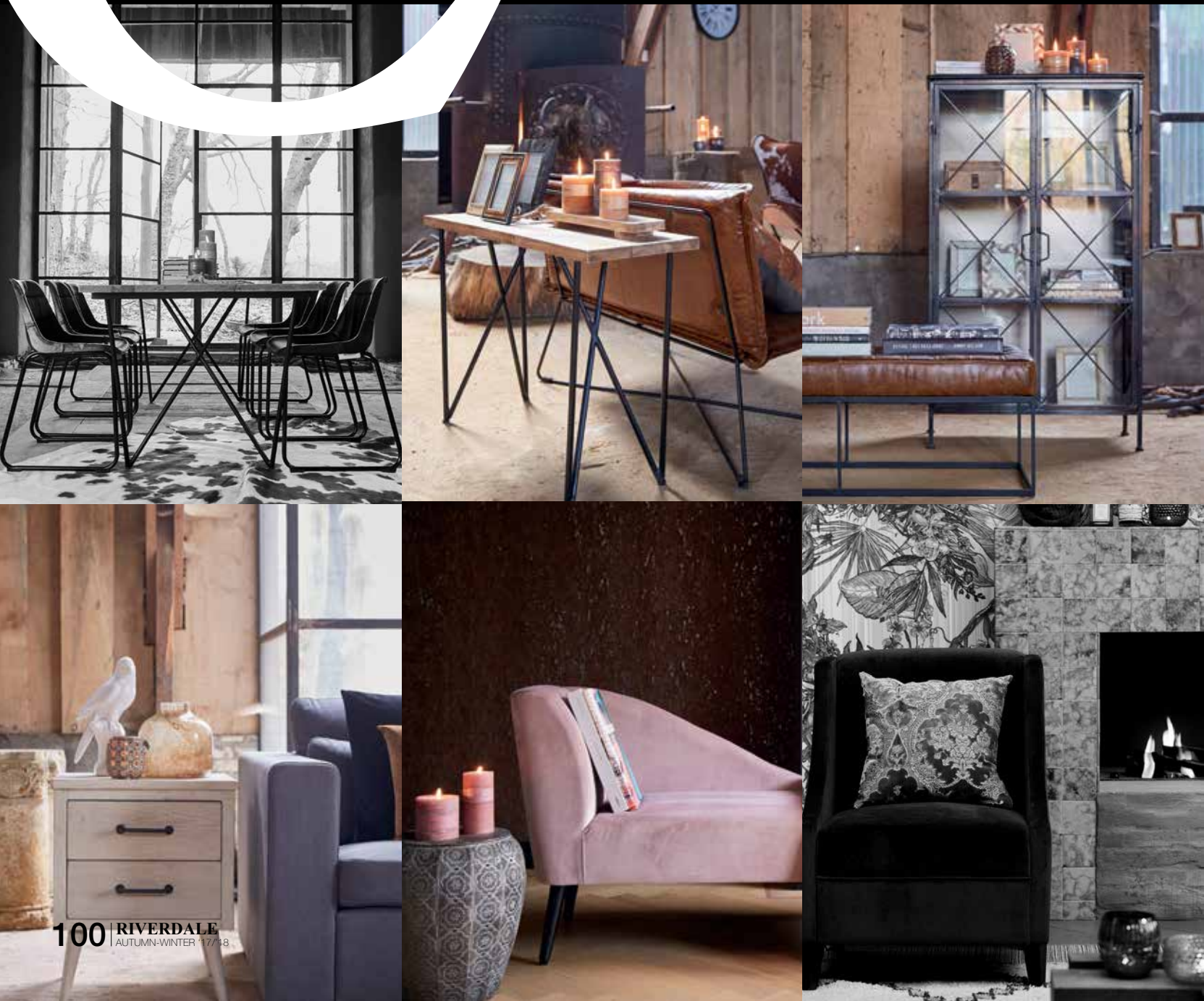


# HOME. COLLECTION

The **HOME.** collection has been created by Riverdale to turn every house into a home with rustic and romantic furniture.



outure for your *dream-home*,  
fashionable furniture from the  
Riverdale HOME. collection.



① Pouf Chelsea dark blue - 70 cm - 002916\* ② Fauteuil Chelsea dark blue - 85 cm - 002917\* ③ Pouf Chelsea dark grey - 70 cm - 002913\* ④ Fauteuil Chelsea dark grey - 85 cm - 002915\* ⑤ Leather chair Brooklyn black - 80 cm - 301562 ⑥ Leather chair Jersey black - 77 cm - 301566 ⑦ Leather chair Brooklyn brown - 77 cm - 301560 ⑧ Leather chair Jersey brown - 77 cm - 301564 ⑨ Leather Pouf Lewis brown - 55 cm - 002960\* ⑩ Leather chair Lewis brown - 82 cm - 002951\* ⑪ Leather bench Lewis brown - 122 cm - 002952\* ⑫ Leather bench Lewis brown - 123 cm - 002953\* ⑬ Side table Amaro s/2 gold - 51 cm - 455000 ⑭ Side table Amaro gold - 73 cm - 455001 ⑮ Side table Amaro gold - 70 cm - 455002 ⑯ Side table Amaro s/2 black - 51 cm - 455003 ⑰ Side table Amaro black - 73 cm - 455004 ⑱ Side table Amaro black - 70 cm - 455005

\*not available in the United Kingdom



left/right  
corner/right  
beige/grey  
armchair/ottoman  
romantic/industrial  
choice/endless



① Corner sofa-l Houston beige - 327 cm - 804004 ② Corner sofa-r Houston beige - 327 cm - 804003 ③ Sofa 3 seater Houston beige - 236 cm - 804002 ④ Armchair Houston beige - 116 cm - 804001 ⑤ Stool Houston beige - 100 cm - 804000



① Corner sofa-l Houston grey - 327 cm - 804009 ② Corner sofa-r Houston grey - 327 cm - 804008 ③ Sofa 3 seater Houston grey - 236 cm - 804007 ④ Armchair Houston grey - 116 cm - 804006 ⑤ Stool Houston grey - 100 cm - 804005



① Corner sofa-l Houston black - 327 cm - 804014 ② Corner sofa-r Houston black - 327 cm - 804013 ③ Sofa 3 seater Houston black - 236 cm - 804012 ④ Armchair Houston black - 116 cm - 804011 ⑤ Stool Houston black - 100 cm - 804010

\*not available in the United Kingdom







# JOY. COLLECTION

The **JOY.** collection has been created by Riverdale to give pure joy to yourself, your home and someone you love. Enjoy every day!



# SCENTED



① Scented candle Bloom rose - 10 cm - 001750 ② Diffuser Bloom rose - 100 ml - 001751 ③ Diffuser Bloom rose - 220 ml - 001752 ④ Diffuser Bloom rose - 500 ml - 001753 ⑤ Candle Swirl Rain Forest Flowers - 7,5x7,5 cm - 009341 ⑥ Candle Pillar Rain Forest Flowers - 7,5x7,5 cm - 009641 ⑦ Candle Swirl Rain Forest Flowers - 7,5x15 cm - 009342 ⑧ Candle Pillar Rain Forest Flowers - 7,5x15 cm - 009642 ⑨ Candle Swirl Rain Forest Flowers - 7,5x23 cm - 009343 ⑩ Candle Pillar Rain Forest Flowers - 7,5x23 cm - 009643 ⑪ Candle Swirl Rain Forest Flowers - 10x10 cm - 009344 ⑫ Candle Pillar Rain Forest Flowers - 10x10 cm - 009644



① Scented candle Forest emerald - 10 cm - 001754 ② Diffuser Forest emerald - 100 ml - 001755 ③ Diffuser Forest emerald - 220 ml - 001756 ④ Diffuser Forest emerald - 500 ml - 001757 ⑤ Candle Swirl Bamboo Green Tea - 7,5x7,5 cm - 009347 ⑥ Candle Pillar Bamboo Green Tea - 7,5x7,5 cm - 009647 ⑦ Candle Swirl Bamboo Green Tea - 7,5x15 cm - 009348 ⑧ Candle Pillar Bamboo Green Tea - 7,5x15 cm - 009648 ⑨ Candle Swirl Bamboo Green Tea - 7,5x23 cm - 009349 ⑩ Candle Pillar Bamboo Green Tea - 7,5x23 cm - 009649 ⑪ Candle Swirl Bamboo Green Tea - 10x10 cm - 009350 ⑫ Candle Pillar Bamboo Green Tea - 10x10 cm - 009650



① Scented candle Lotus blue - 10 cm - 001758 ② Diffuser Lotus blue - 100 ml - 001759 ③ Diffuser Lotus blue - 220 ml - 001760 ④ Diffuser Lotus blue - 500 ml - 001761 ⑤ Candle Swirl Blueberry - 7,5x7,5 cm - 009364 ⑥ Candle Pillar Blueberry - 7,5x7,5 cm - 009664 ⑦ Candle Swirl Blueberry - 7,5x15 cm - 009365 ⑧ Candle Pillar Blueberry - 7,5x15 cm - 009665 ⑨ Candle Swirl Blueberry - 7,5x23 cm - 009366 ⑩ Candle Pillar Blueberry - 7,5x23 cm - 009666 ⑪ Candle Swirl Blueberry - 10x10 cm - 009367 ⑫ Candle Pillar Blueberry - 10x10 cm - 009667



① Scented candle Pure dark grey - 10 cm - 001762 ② Diffuser Pure dark grey - 100 ml - 001763 ③ Diffuser Pure dark grey - 220 ml - 001764 ④ Diffuser Pure dark grey - 500 ml - 001765 ⑤ Car perfume White Flower 12 cm - 001902 ⑥ Car perfume Sea Fresh 12 cm - 001903 ⑦ Car perfume Musk Amber 12 cm - 001904 ⑧ Car perfume Black Forest 12 cm - 001905





# LOFT. COLLECTION

All the ingredients for a good night's sleep...

[a comfortable bed] you need the  
right bed to fall easily asleep  
[beautiful dream] a dream of joy and  
happiness for everyone [relaxed]  
after a good night's sleep you are  
feeling happy, comfortable,  
and ready for a new day.



# Sweet



# Pure



# Basic

# RUSTIC

110 | RIVERDALE  
AUTUMN-WINTER '17/18

LOFT. collection



① Duvet 1-p Pure light grey - 140x200/220 cm - 803020 ② Lits jumeaux Pure light grey - 240x200/220 cm - 803022 ③ Duvet 1-p Dream beige - 140x200/220 cm - 803008 ④ Lits jumeaux Dream beige - 240x200/220 cm - 803010 ⑤ Duvet 1-p Pure dark grey - 140x200/220 cm - 803024 ⑥ Lits jumeaux Pure dark grey - 240x200/220 cm - 803026 ⑦ Duvet 1-p Original Brand grey - 140x200/220 cm - 803012 ⑧ Lits jumeaux Original Brand grey - 240x200/220 cm - 803014 ⑨ Duvet 1-p You&Me white - 140x200/220 cm - 803004 ⑩ Lits jumeaux You&Me white - 240x200/220 cm - 803006 ⑪ Duvet 1-p Sleep white - 140x200/220 cm - 803000 ⑫ Lits jumeaux Sleep white - 240x200/220 cm - 803002

\*only available in The Netherlands, Belgium and France

RIVERDALE | 111  
AUTUMN-WINTER '17/18



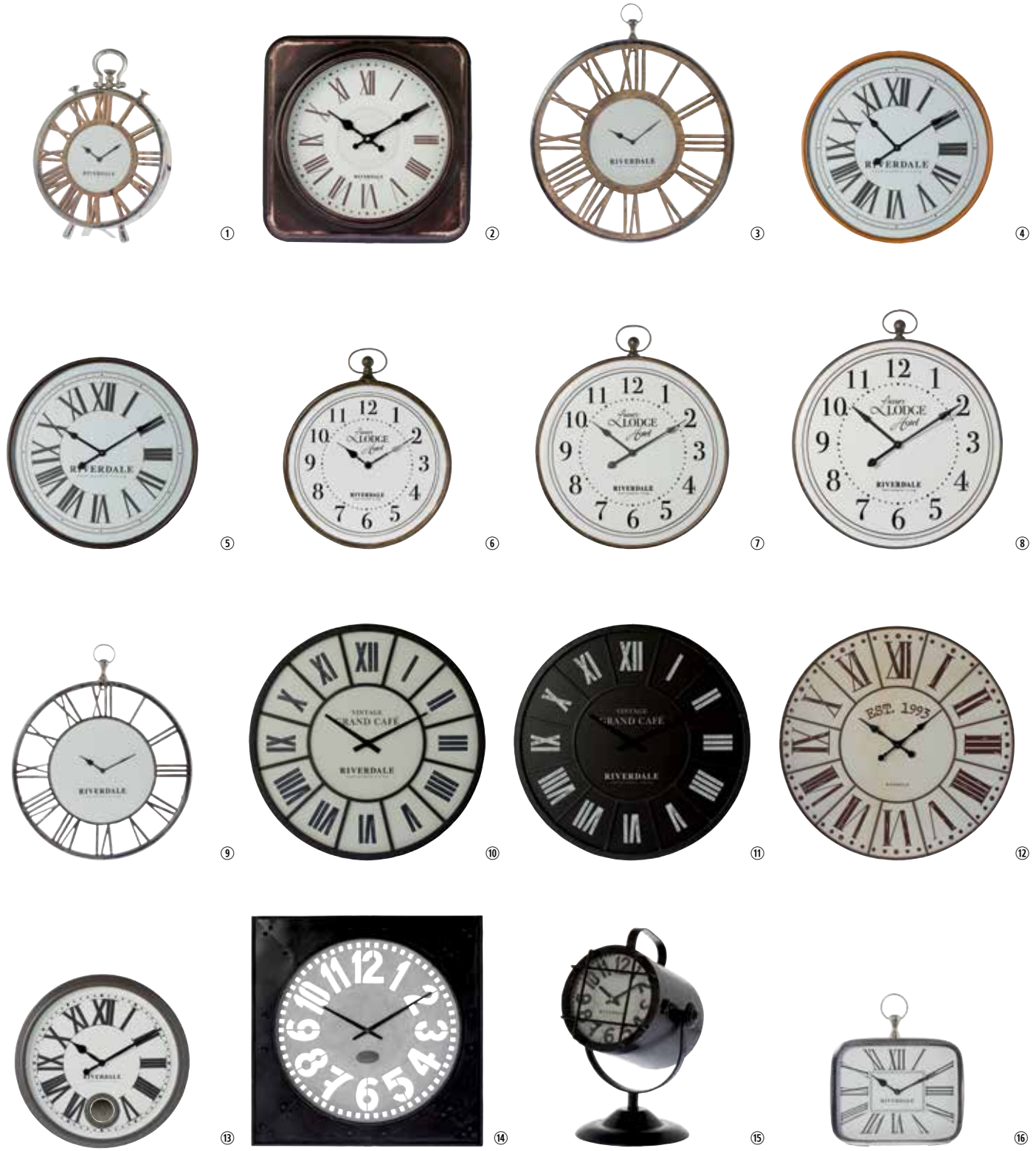


# TIME. COLLECTION

The **TIME.** collection has been created by Riverdale to always let you know what time it is. Make every minute count and cherish the valuable moments. Enjoy every second!



# Take TIME



① Table clock Luton silver - 40 cm - 308602 ② Wall clock Camden brown - 36 cm - 003706 ③ Wall clock Luton silver - 70 cm - 308606 ④ Wall clock Camden bronze - 68 cm - 003710 ⑤ Wall clock Camden brown - 68 cm - 003712 ⑥ Wall clock Lodge white/brown - 48 cm - 004817 ⑦ Wall clock Lodge white/brown - 81 cm - 004818 ⑧ Wall clock Lodge white/brown - 109 cm - 004819 ⑨ Wall clock Luton silver - 50 cm - 308608 ⑩ Wall clock Grand Cafe white - 63 cm - 003862 ⑪ Wall clock Grand Cafe black - 63 cm - 003866 ⑫ Wall clock Vintage brown - 102 cm - 004824 ⑬ Wall clock Classic brown - 42 cm - 003834 ⑭ Wall clock Vintage black - 70 cm - 008301 ⑮ Table clock Vintage black - 37 cm - 008299 ⑯ Table clock Luton silver - 25 cm - 308600





# #FASHIONABLELIVING

SHARE YOUR MOST INCREDIBLE RIVERDALE PICTURE  
ON [INSTAGRAM.COM/RIVERDALE.LIVING](https://www.instagram.com/riverdale.living)

## FOLLOW US

[FACEBOOK.COM/RIVERDALE.LIVING](https://www.facebook.com/riverdale.living) [PINTEREST.COM/RIVERDALELIVING](https://www.pinterest.com/riverdaleliving) [INSTAGRAM.COM/RIVERDALE.LIVING](https://www.instagram.com/riverdale.living)





**EXC  
LU  
SIVE**

**OFFER**

Starting September 1<sup>st</sup>, exclusively available at all Riverdale Inspiration Shops and Floors in the Netherlands, Belgium, Germany and Estonia (price per unit, while stocks last)

from 11,95 now

**9,95**

Available in:  
clear, beige & grey  
14,5 cm

from 47,95 now

**39,95**

Available in:  
clear, beige & grey  
28 cm

# HURRICANE LORAINE





*eat*  
**DRINK**  
*be merry*

*Christmas is a time of joy, shared with friends and family. Good food plays an important role in this. My family lives in South Africa, which means that I cannot celebrate this special time with them. I used to find this very difficult before but fortunately I've been able to move on.*

*When I now have my nearest and dearest around me, I know that everything will be alright! I can really look forward to getting my home ready for the festivities. Putting up the tree, decorating the table, and, of course, putting together the Christmas menu with the tastiest ingredients. I hope to inspire everyone with these recipes!*



GLOW  
SPARKLE  
SHINE  
GLIMMER  
GLOW  
SPARKLE  
SHINE  
GLIMMER  
GLOW





*You can serve a granita as an entremets or as a sweet finish to round off a meal.*

*The flavour of this recipe is based on the popular drink gin and tonic.*

125 ml sugar | 10 g fresh mint, finely chopped | 500 ml tonic | 125 ml water | 90 ml gin | juice and zest of two lemons

Make sugar water by boiling the water and sugar together in a pan until the sugar has completely dissolved. Then add the fresh mint and the juice and zest of the limes. Leave to simmer gently for ten minutes. Turn off the heat after ten minutes and leave the mixture to cool. When it has cooled down, add the gin and tonic and place in the freezer for approximately six hours. It is important to scrape the ice with a fork every hour. This creates the actual granita.

# Gin & TONIC

GRANITA



# Chicken liver parfait

WITH CONSERVED QUINCE AND A WHITE WINE JELLY

*Want to push the boat out this Christmas? Surprise your friends and family with this delicious recipe!*

## Chicken liver parfait:

350 g chicken livers, cleaned | 175 g butter, cut into cubes | 5 g fresh thyme, finely chopped | 3 g salt | 3 g ginger | 1 shallot, finely chopped | 75 ml Madeira | 75 ml cream

## Poached quinces:

400 g quinces | 10 g caster sugar or fine granulated sugar | 5 coriander seeds | 1 cinnamon stick | 1 star anise | 300 ml red wine

## Method for chicken liver parfait:

Heat the butter in a frying pan. Place the shallot and thyme in a pan and fry until soft. Add the chicken livers and fry skin side down until browned. Then transfer the chicken livers to a food processor. Pour the Madeira in the pan and boil until the liquid is reduced. Add the Madeira, cream, salt, and pepper to the chicken livers in the food processor and mix until you have a smooth consistency. Finally, add 90 g of butter and mix once again. Pass everything through a sieve. Melt the remaining butter and remove the layer of froth. Pour the melted butter over the chicken liver parfait, cover, and store in the refrigerator.

## Method for poached quinces:

Put the wine, cinnamon, star anise, coriander seeds, and sugar in a pan and bring to the boil. Leave the mixture to simmer for about five minutes until it has a syrupy consistency. Peel and chop the quinces and add them to the pan. Create a lid from baking paper and place on the pan to prevent the quinces from drying out. Boil the mixture for fifteen minutes and then leave it to cool down. Store it in the refrigerator.

## White wine jelly

15 g sugar | 9 g gelatine | 250 ml white wine | 5 ml white wine vinegar

Place the gelatine in 60 ml wine and set aside. Put 190 ml of wine, and the white wine vinegar, and sugar in a large pan. Heat until the sugar has dissolved. Remove the pan from the heat just before the mixture starts to boil. Add this mixture to the gelatine and stir until the gelatine has dissolved.

Pour everything into a plastic container and place in the refrigerator to cool down.



BURGUNDY  
MERLOT  
BUBBLES  
SEXY  
CANDLES  
WINE  
BOUDOIR  
DELICIOUS  
FEATHERS  
SOPHISTICATED  
BURGUNDY  
MERLOT  
BUBBLES





# Fillet

WITH RED WINE SAUCE AND A POTATO AND CELERIAC PUREE

*The fillet is the most luxurious and tender cut of beef. It doesn't need much to make it taste delicious. Although it is not difficult to prepare fillet, it is important to carefully follow the recipe. A good tip to achieve the best result is to ensure that the meat is at room temperature when it is fried.*

800 g fillet | 80 g butter | freshly ground pepper | salt

#### Red wine sauce:

30 g butter | 2 cloves of garlic, finely chopped | 2 sprigs of fresh rosemary, remove leaves from the stalk | 1 shallot, finely chopped | 125 ml red wine | 125 ml beef stock | 60 ml cream | salt and freshly ground pepper

#### For the purée:

600 g flouy potatoes, peeled and cut into cubes | 70 g butter | half a celeriac, peeled and cut into cubes | 60 ml cream | salt and freshly ground pepper

#### Method for fillet:

Preheat the oven to 220°C. Mix together some salt and freshly ground pepper and rub the mixture all over the fillet. Heat the butter in a heavy-bottomed frying pan. Fry the fillet on all sides. Remove the meat from the pan and place on a baking tray. The inside of the meat should reach a temperature of 55°C (medium). It is handy to use a meat thermometer for this purpose. Remove the fillet from the oven when it has reached a temperature of 55°C. Wrap the meat in aluminium foil and set aside to rest.

#### Method for red wine sauce:

Fry the finely chopped shallot and garlic in some butter until the shallot becomes translucent. Then add the red wine and leave it to reduce to approximately half the original amount of wine. Add the beef stock and reduce to half again. Remove the pan from the heat and add 40 g of the butter. Stir the butter into the mixture and add a pinch of salt and pepper to season the sauce.

#### Method for purée:

Bring a large pan of water to the boil. Add the cubes of potato and celeriac when the water is boiling. Drain the potatoes and celeriac when they are both soft. Then purée the potatoes and celeriac. Add the butter and cream and mix well. Season the purée with some salt and pepper.

MAIN COURSE  
serves 4

## Mushrooms

WITH FRESH THYME

350 g chestnut mushrooms | 30 g butter |  
10 g fresh thyme | 2 cloves of garlic, finely chopped |  
15 ml freshly-squeezed lemon juice | salt and pepper  
to taste

Heat the butter and garlic in a pan.  
Then add the mushrooms and fresh thyme.  
Season the mixture with a pinch of salt and pepper.  
Pour in the lemon juice and leave to boil.  
Finish cooking the mushrooms  
until done to satisfaction.





CHESTNUT  
PINEAPPLE  
RUSTIC  
NATURAL  
WARM  
CHOCOLATE  
SILVER  
VANILLA  
CHESTNUT  
PINEAPPLE  
RUSTIC  
NATURAL





# Chocolate soufflé

WITH CRÈME ANGLAISE

*Who doesn't love a creamy chocolate soufflé? Some people think it is difficult to make a soufflé yourself but nothing could be further from the truth. If you follow the recipe carefully, it will turn out just fine! You can prepare the mixture for the soufflé beforehand, but you need to serve it immediately once it comes out of the oven.*

**Chocolade soufflé:**

350 g good quality dark chocolate, chopped | 30 g caster sugar or fine granulated sugar |  
6 large egg whites, at room temperature (240 g) | 2 large egg yolks (40 g) | 125 ml cream | salt

**Anglaise saus:**

100 g caster sugar or fine granulated sugar | 5 egg yolks | 1 vanilla pod, halved and deseeded |  
250 ml milk | 250 ml cream | 60 ml whisky (You can also opt to leave out the whisky) | salt


**Method for chocolate soufflé:**

Preheat the oven to 220°C. Grease six ramekins with melted butter and sprinkle with sugar. Place the ramekins on the baking tray separately. Melt the chocolate au bain-marie until it has a smooth consistency. Remove the bowl from the heat and stir the two egg yolks and some salt into the chocolate. Beat the egg whites in a bowl with a mixer until they form stiff peaks. Add the sugar one spoon at a time while continuing to mix. Rub a little of the egg white mixture between your fingers to check if all the sugar has dissolved. If it still feels granular, continue to beat the egg whites at a high speed until the sugar has completely dissolved. Now add 1/3 of the beaten egg whites to the chocolate mixture. Carry on until all the egg whites have been mixed with the chocolate. Fill the ramekins right to the top and return them to the baking tray. Place the baking tray in the centre of the oven and bake for approximately fourteen minutes. Serve the chocolate soufflé with the crème anglaise.

**Method for crème anglaise:**

Gradually bring the milk, cream, and vanilla pod to the boil. Mix the egg yolks and the sugar until all the sugar has dissolved and you have a light yellow mixture. Remove the vanilla pod from the pan and slowly pour the mixture into the egg yolk mixture. Stir these two mixtures thoroughly and return the pan to the heat to heat up slowly. The sauce is ready when it sticks to the wooden spoon. Finally, add the whisky and the salt and stir well. Pass through a sieve to remove any pieces of cooked egg.



A festive still life featuring a champagne glass with a white drink and a gold ribbon, a bottle of champagne, a snow globe, and lit candles.

The Christmas Express starts to spread magic and dazzle with the coming of December. The festive tea lights, soft cushions and throws, cinnamon-scented candles, tinsel, and toy reindeer take up their traditional place in the home. Our Christmas celebrations will once again be a feast of gold and burgundy, as we have a lot to celebrate. Wishing you a merry everything!



The  
*Christmas*  
 Express  
 2017



9X GOLD



①



②



③



④



⑤



⑥



⑦



⑧



⑨

① Cushion Feathers gold - 45x45 cm - 003531 ② Hurricane Chelsea gold - 43 cm - 007883 ③ Led-cloche Shimmer smoke - 19 cm - 416053-17 ④ Vase Antique gold - 52 cm - 303118 ⑤ Wreath Noël gold - 40 cm - 460802 ⑥ Branch gold - 84 cm - 003146 ⑦ Snow globe Joy gold - 14 cm - 460656 ⑧ Cushion Chique brown - 45x45 cm - 003537 ⑨ Hurricane Elegance gold - 46 cm - 007885



# Gold fever

soothed with bubbles...





# Snow globe

shake it up baby!





## WHERE TO BUY *shop till you drop*

**THE NETHERLANDS** **ALBLASSERDAM** Zijdeveld Garden and Home, Vinkenpolderweg 19 **RIS ALMELO** Intratuin, Schuilenburgsingel 5 **RIF ALMERE** Intratuin, Euphoniumweg 5 **RIF ALMERE** Casa Cosi, Markerkant 1116 **RIS ALPHEN A/D RIJN** Tuincentrum De Bosrand, Prinsen Schouw 1 **RIF AMERSFOORT** Intratuin, Amsterdamseweg 139 **RIF AMSTELVEEN** De Troubadour, Maalderij 32-34 **RIF APELDOORN** Intratuin, De Voorwaarts 420 **RIF APELDOORN** De Groot Wonen Het Rietveld 20 **RIS ASSEN** Tuinland, Borgstee 70 **RIF BERGAMBACHT** Cadeaushop Rodenburg, Hoofdstraat 35-37 **RIS BEST** No.31 Wonen & Lifestyle, Oirschotseweg 31 **RIS BREDA** Intratuin, Terheijdenseweg 296 **RIF BUDEL** Slenders Wooncomfort, Burg. van Houtstraat 71 **RIS BUITENPOST** Shadeenga Wonen, Voorstraat 2-10 **RIF CAPELLE A/D IJSSEL** De ZuiderSter, Hoofdweg 18 **RIF CRUQUIUS** Intratuin, Spaarneweg 251 **RIF DE KOOG-TEXEL** Mieters Cadeau & Woondecoratie, Dorpsstraat 87b **RIS DEN BOSCH** GreenRijk, Graafseweg 244-246a **RIF DEN HAAG** Tuincentrum Ockenburgh, Loosduinse Hoofdstraat 875 **RIF DENEKAMP** Tuincentrum Oosterik, Johanninksweg 68 **RIF DEURNINGEN** Tuincentrum Borghuis, Vliegvelddstraat 2 **RIF DOMBURG** BoMont, Ooststraat 1 **RIS DORDRECHT** Tuinwereld, Provincialeweg 4a **RIF DUIVEN** Intratuin, Lithograaf 1 **RIF ECHT** Hees Lights & Living, Zuiderpoort 66 **RIS ELST** Intratuin, Nieuwe Aamsestraat 94 **RIF EMMEN** Budget Home Store XXL, Cornelis Houtmanstraat 45 **RIS EMMEN** Intratuin, Nijbracht 25 **RIF ENSCHEDE** Intratuin, Achterhofweg 22 **RIF ENSCHEDE** Maison Manon, Hengelosestraat 123 **RIF ETTEN-LEUR** Life & Garden, Lage Vaartkant 11 **RIF ETTEN-LEUR** BoMont, Winkelcentrum 16 **RIS GARDEREN** De Beeldentuin, Oude Barnevelderweg 5 **RIF GELDERMALSEN** Veldhoven Interieur, t Hooghuis 8-9 **RIS GELEEN** Intratuin, Egelantier 19 **RIF GOES** BoMont, Grote Markt 1 **RIS GRONINGEN** Kruit en Kramer, Hoendiep 99c **RIF GRONINGEN** Tuinland, Peizerweg 91 **RIF HALSTEREN** Intratuin, Halsterseweg 65a **RIF HARDENBERG** Vasse Koken & Kado's, Bruchterweg 21 **RIS HARDERWIJK** Silo 6, Marie Curiestraat 2b **RIS HEERHUGOWAARD** Intratuin, Zuidpoort 1 **RIF HEERLEN** Trendhopper, In de Cramer 182 **RIF HEEZE** Latido, Jan Deckersstraat 23 **RIS HELLEVOETSLUIS** Feelings, Rijkstraatweg 120-124 **RIF HENDRIK IDO AMBACHT** Intratuin, Langeweg 21 **RIF HILVERSUM** Intratuin Kortenhoef, Kromme Rade 2a **RIF HOOGEZAND** Koken & Wonen, Meint Veningastraat 14 **RIS HOORN** Intratuin Oosterblokker, Noorderdracht 20a **RIF HORST** Budget Home Store XXL, Whiteveldweg 100 **RIF HUIZEN** Tuincentrum Rebel, Dr. Lelylaan 2 **RIF HULST** Life & Garden, Absdaalseweg 70 **RIF IJSSELSTEIN** Intratuin, Weg der Verenigde Naties 2 **RIF KAMPERLAND** BoMont, Ruitersplaatweg 11 **RIS KATWIJK AAN ZEE** Haasnoot Wonen, Voorstraat 41 **RIS KLAZIENAVEEN** Trends & Vloeren, Langestraat 123 **RIS LEEUWARDEN** Woonboulevard Leeuwarden, Voltastraat 11a **RIF LOCHEM** Intratuin, Goorseweg 27 **RIF MAASTRICHT** Intratuin, Molensingel 87 **RIF MALDEN** Intratuin, Rijksweg 63 **RIF MEPPEL** Intratuin, Berggiersweg 1 **RIF MIDDELBURG** M40 Styling & Wonen, Mortiereboulevard 40 **RIF MIDDELBURG** BoMont, Markt 73 **RIS NIJKERK** Intratuin, Het Spaanse Leger 1 **RIF NOOITGEDACHT** Hof van Saksen, Veldweg 22-24 **RIF NUENEN** Intratuin, Collse Hoefdijk 7 **RIF NUMANSDORP** Intratuin, Volgerlandseweg 1a **RIF OISTERWIJK** Tuincentrum Coppelmans, Heukelomseweg 26 **RIF OLDENZAAL** Trendhopper, Kleibultweg 48 **RIF OOSTEIND** Labax, Provincialeweg 88a **RIS OSS** Verbruggen Megastore, Frankenweg 25-27 **RIF OUDERKERK A.D. IJSSEL** Tiendhoek, Kerkweg 170b **RIS PIJNACKER** Intratuin, Rijkskade 1a **RIF POORTVLIET** Woonboulevard Poortvliet, Paasdijkweg 33 **RIF PURMEREND** Sfeerwonen & Zo, Gedempte Singelgracht 6 **RIS RENESSE** BoMont, Hogezoom 171 **RIS RIJNSBURG** Tuincentrum De Mooij, Noordwijkerweg 36 **RIF RIJSBERGEN** Tuincentrum De Bosrand, Antwerpseweg 30a **RIF RIJSSEN** Otje van Potje, Haarstraat 170 **RIS RIJSWIJK (NB)** Tuincentrum Kolbach, Veldweg 27a **RIF ROERMOND** Tuincentrum Roermond, Sint Wirosingel 180 **RIF ROSMALEN** Intratuin, Empelseweg 9 **RIF 'S-GRAVENZANDE** Intratuin, Monsterseweg 129 **RIF SLUIS** BoMont, Plompe Toren 4 **RIS SLUIS** Hollandia Kado, Shadeellestraat 37 **RIS STAPHORST** Boer Staphorst, Achthoevenweg 2 **RIF STRIJEN** De Bommel, ChRiStian Huygenstraat 3 **RIS TER AAR** Intratuin Veldweg 1 **RIF TERNEUZEN** BoMont, Noordstraat 109 **RIS TILBURG** GreenRijk, Stokhasseltlaan 39 **RIF TWELLO** Intratuin Deventer, Burg. van der Feltzweg 142 **RIF UTRECHT** Intratuin, Koningsweg 87 **RIF UTRECHT** De Bommel, Vrieslandtlaan 20a **RIS VEGHEL** Intratuin, Heuvel 11 **RIF VELDHOVEN** GreenRijk, Polderstraat 17 **RIF VENLO** Tuincentrum Leurs, Straelseweg 370 **RIF VLODROP** Tuincentrum Daniëls, Herkenbosserweg 4 **RIF VOORSCHOTEN** Intratuin, Leidseweg 518 **RIF WARMENHUIZEN** De meiden van Spaansens, Dorpsstraat 44 **RIS WASSENAAR** Tuincentrum De Bosrand, Rijkstraatweg 361b **RIF WEERT** Intratuin, Roermondseweg 147 **RIF WESTERHAAR** Woonwinkel Frits Vos, Hoofdweg 185 **RIS WEZEP** Valeur Home Decoration, Stationsweg 31 **RIS WIJCHEN** Sfeerderij de Golden Engel, Touwslagersbaan 3 **RIS WINSCHOTEN** Kloosterhuis Wonen, Langestraat 74 **RIS WOLVEGA** Home Center, FRISaxstraat 12 **RIF WOUDENBERG** Living24, Voorstraat 24 **RIS ZEVENHUIZEN** Intratuin Zuidplas, Bredeweg 86c **RIF ZOETERMEER** Intratuin, Voorweg 192 **RIF ZOUTELANDE** BoMont, Langstraat 13 **RIS ZWOLLE** Tuinland, C. Storkstraat 2 **RIF BELGIUM** **AARSCHOT** Unikamp, Diestsesteenweg 16 **RIS BALEN** Odrada, Molsesesteenweg 46 **RIS BELSELE** Deba Meubelen, Lokersebaan 10 **RIF BILZEN** Hardy Bloemen, St. Jorisstraat 3 **RIS BRAKEL** Tapico, Neerstraat 38 **RIS BRUGGE** Teakstore, Oude Oostendse Steenweg 187 **RIS DEURNE** Tuincenter Abies, Herentalsebaan 556 **RIS DIEGEM** Reno, Zaventemsesteenweg 154-160 **RIS ERPE-MERE** Tuincentrum Goessens, Opaigem 26 **RIF GENK** Prenuptia, Hasseltweg 240 **RIF GENK** Wara, Stalenstraat 86 **RIF GENT** Fabrieksmeubel, Koningsdal 43 **RIS GOZEE** Jardiland, Rue de Marchienne 104 **RIS GULLEGEM** Supra Bazar, Driemasten 109 **RIS ICHTEGEM** Intergarden Design, Torhoutbaan 10 **RIS IZEGEM** Top Interieur, Ambachtenstraat 6 **RIS KORTEMARK** F & J Vermeersch, Edewallestraat 96 **RIS KURINGEN HASSELT**

RIF = Riverdale Inspiration Floor RIS = Riverdale Inspiration Shop

Bloemen Thomas, Kuringersteenweg 394 **RIF LIER** Gero Meubelen, Aarschotsesteenweg 151 **RIS LOCHRISTI** Mega Deschacht, Antwerpsesteenweg 104 **RIS LOMMEL** Ixora, Vreyshorring 74 **RIS LONDERZEEL** Moens Meubelen, Mechelsestraat 191 **RIS LOVENDEGEM** Intratuin, Grote Baan 249 **RIF MARCHE EN FAMENNE** Luxgreen, Chausseé de Liège 174 **RIF MASSENHOVEN** Top Interieur, Liersebaan 123b **RIS MESSANCY (WOLFRANGE)** Luxgreen, Rue des Ardenne 25 **RIS OPWIJK** Tuincenter Lissens, Steenweg op Lebbeke 14 **RIS RIEMST** Eycken Interieurs, Tongersesteenweg 139 **RIS RONSE** Duquin Miel & Zn, Zuidstraat 10 / Rue du Midi 10 **RIS ROOSDAAL** Loft Interieur, Ninoofsesteenweg 110 **RIS SINT ELOOIS-VYVE (WAREGEM)** Europoint, Gentseweg 494 **RIS SINT-GILLIS-WAAS** Meubelen Verberckmoes, Kempshoekstraat 56 **RIS SINT-TRUIDEN** Invito Home Collections, Ridderstraat 12 **RIS TEMSE** Tuincenter Van Buynder, Hoogkamerstraat 196 **RIS TINLOT** Rulot Home Décoration, Rue du Montys 18 **RIS TONGEREN** Vroonen Home, Sint Truidersteenweg 8 **RIS TORHOUT** HoMe Style Boutique by Verf- en Behangcenter, Kortemarkstraat 20 **RIS VERVIERS** Pauly-Andrienne, Rue Bioley 17 **RIF VICHTE** Molecule, Pareelstraat 7 **RIF WERVIK** Marleen Salomez, Nieuwstraat 52 **RIS ZOERSEL** Rodendijk 18, Rodendijk 18 **RIS ZOTTEGEM** Teakstore, Provinciebaan 180 **RIS GERMANY** **BAD KREUZNACH** Bellandris Gartencenter Rehner, Am Grenzgraben 20 **RIF BIELEFELD** Gartencenter Mühlenweg, Südring 9 **RIF BOCHUM** Fritz Ziesak, Hauptstrasse 90 **RIF DÜSSELDORF** Galeria Kaufhof-Carsch-Haus, Heinrich-Heine-Platz 1 **RIS EMSBUREN** Gartenweit Emsbüren, Merianstrasse 1 **RIF FRANKFURT** Galeria Kaufhof, Zeil 116-126 **RIS HAMBURG** Schulze Outdoor Living, Waldweg 95 **RIS HAMM** Gartencenter Hesse, Kampshege 2 **RIF HERXHEIM** Weber Möbel, Im Gewerbepark West 1 **RIS LANDAU I.D. PFALZ** Floraland Gillet, Gilletstrasse 1-3 **RIF LILIENTHAL** Gebr. Weingärtner, Seeberger Landstrasse 60 **RIF OTTERSBERG** Outdoor Living Thomas Wilkens, Schmiedestrasse 2 **RIS SPROCKHÖVEL** Bellandris Mencke Gartenrcenter, Schmiedestrasse 33 **RIF VERDEN** Gebr. Weingärtner, Bertha-Benz-Strasse 11 **RIF VLOTHO** Piano Nobile, Lange Strasse 104 **RIS ESTONIA** **HARJUMAA** Hansaplant, Kangru tee 19, Kiili vald **RIF FRANCE** **TREIGNAC** La Monarde, Z.A. La Vélyriere **RIS IRELAND** **KILKENNY** Meubles Unit, 12 Smithlands Retail Park **RIS CURACAO** **GROOT DAVELAAR** Techniek & Design, Schouwburgweg Z/N **RIS**

## KITCHEN DEALERS

**THE NETHERLANDS** **BOLSWARD** BKB Keukens, Industriepark 4 **DELFT** Bouwmaterialenhandel Koolschijn, Rotterdamseweg 352 **DEN HAAG** Hans van der Helm Keukens, Weimarstraat 173 **DEN HAAG** Wim van der Ham Keukens, Theresiastraat 168-178 **EINDHOVEN** Loomans Keukens, Aalsterweg 115 **GROU** Stienstra Keukens, Biensma 32 **HEERHUGOWAARD** Ant. Duijn Keukens, Hasselaarsweg 21 **KAMPEN** Keukendesign Kampen, Bedrijfsstraat 4 **KRIMPEN A/D LEK** Idejo Keukens, Tiendweg 39a/b **LISSE** Top Keukens Lisse, Heereweg 380 **LOBITH** Winkels Keukens, Energieweg 1 **MIDDELHARNIS** Tieleman Keukens, Korendreef 15 **MILSBEEK** Keukenatelier Brands, Kerkstraat 36 **RIJSWIJK (ZH)** Dekkers Keukencentrum, Herenstraat 17 **UITHUIZEN** Intreal, Industrieweg 14 **VOLENDAM** Nieuw Leven, Bokkingstraat 11 **WELLSEIND** Keukencentrum Vosseling, Wellseindsstraat 9 **WIJCHEN** Keukenspecialzaak Janssen, Nieuweweg 200 **ZOETERMEER** Wim van der Ham Keukens, Wattstraat 12-14 **FRANCE** **TREIGNAC** La Monarde, ZA la Vélyriere

## BATHROOM DEALERS

**THE NETHERLANDS** **ALMERE** Baderie Almere, Hopperzuigerstraat 1b **AMSTERDAM** Meester Smeets, Vredenhofweg 5 **BARNEVELD** Van Manen Badkamers, Dr. Willem Dreeslaan 2 **BLEISWIJK** Baderie Bleiswijk, Alfred Nobelstraat 7 **DAARLE** Veneman Keukens, Dalvoordeweg 21 **DEN HAAG** Wim van der Ham Keukens, Theresiastraat 168-178 **EERSEL** Van den Boomen, Kerver 8 **EINDHOVEN** St. Pieter, Bruggelaan 2 **ERMELO** Baderie Ermelo, Dokter Holtropstraat 136 **HOOGKARSPER** Streker Tegelhuis, Streekweg 353 **HORST** Baderie Horst, Whiteveldweg 100 **HOUTEN** Baderie Houten, De Maat 1 **KATWIJK** Bouwton B.V., Valkenburgseweg 89 **LISSE** Baderie Hoes, Meer en Duin 80c **MARKNESSE** YRO Keukens, Expansie 10 **ROSMALEN** Baderie Piels, Vinkenveld 6a **SNEEK** Zania Keukens, Wolkammerstraat 4A **SOMEREN** Baderie Leenen, Half Elfje 2 **STAPHORST** Boer Staphorst, Achthoevenweg 2 **TILBURG** St. Pieter, Broekhovenseweg 130d **TYNAARLO** Bad in Beeld Johan Seggers, Mercuriusweg 4 **VELDHOVEN** Baderie Heesakkers, Shadeelstraat-Zuid 45 **WEERT** Baderie Snijders, Moesdijk 22 **WINSCHOTEN** Baderie Verheek, Zeefbaan 13 **WORMER** Baderie M&O Techniek, Eendrachtstraat 25 **BELGIUM** **HAMME** Van Steen Sanitair, Hoogstraat 39



# Bestsellers



## Copyright

### Riverdale Magazine autumn-winter 2017/2018

No part of this publication may be reproduced and/or disclosed by means of print, photocopy, film, or any other means whatsoever without the prior written permission of Riverdale. It is also not permitted to include the magazine in a magazine portfolio without approval in writing from Riverdale. Subject to changes in the price and model as well as typesetting errors. The printed colours may differ from the original colours. The prices are recommended retail prices and may therefore be different from the prices at the points of sale. All images and copy used are the property of Riverdale unless otherwise stated. The arrival of furniture and accessories at the points of sale will be staggered over time.



Note: never leave burning candles unattended and always think carefully about where to position them due to the possible fire hazard.

Impressed druk en print [Print house]

The story of your life  
a novel of nature...







With our **PASSION**  
for *style* and interior  
we would **love** to  
make your *home*  
**fashionable**

